



Integrating Needs of Affected Communities in Operational Planning and Prioritization

Dominic Wolsey | GICHD – GMAP

08/07/21 Page 1 © GICHD

1



Why?

- Diverse groups will often have different:
 - Information
 - Priorities and needs
 - Barriers to access
 - Ability to participate meaningfully

Dominic Wolsey | GICHD – GMAP

08/07/21 Page 2 © GICHD

2



How?

- Understand the context
 - Gender and diversity analysis
- Adopt an inclusive approach to data collection
 - Ensure broad participation
 - Consider access
 - Recognise power structures
- Mainstream gender and diversity in priority-setting process

3



Inclusive Approach to Data Gathering

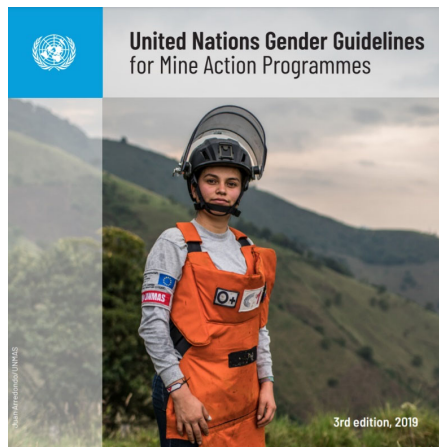
- Recognise power structures and marginalised groups
- Actively engage with as wide a group as reasonable in the community
- Think about access and how to overcome barriers
- Facilitate broad participation through adoption of participatory methods
- Give equal importance to priorities and preferences

4



Resources

- UN Gender Guidelines for Mine Action Programmes (3rd ed.)
 - Arabic
 - English
 - French
 - Spanish



5



Resources

- GICHD Online Training: Introduction to Gender & Diversity in Mine Action
 - Arabic
 - English
 - Spanish
 - Ukrainian



www.training.gichd.org

6



GICHD

Resources

- GICHD Toolkits
 - Gender and **Priority Setting** in Mine Action
 - Gender and Diversity Responsive **Victim Assistance**
 - Gender and Diversity in **Contracting and Grants Management**
 - Gender and Diversity in **Quality Management**
 - Gender and Diversity in **Recruitment & Training**
 - Guidance on **Protection from Sexual Exploitation and Abuse in MA**



Gender and Priority-Setting

KEY MESSAGES

- Small or prioritization is a vital component of land mine clearance in the priority-setting process to obtain comprehensive and accurate information for identifying preferences, conducting surveys and mapping, and prioritizing clearance.
- Encourage participation of all gender and age groups in each mine-affected community to obtain comprehensive and accurate information for survey, mapping and prioritizing clearance.
- Conduct a full range of stakeholder – women, girls, boys and men – to increase the quality and relevance of information gathered. This will inform decisions on cancellation and release of land through survey and clearance.
- Collect and analyse sex and age-disaggregated data and use findings to inform planning, prioritization, implementation and monitoring/evaluation.
- Ensure priority-setting indicators, and weighting systems used for the prioritization of clearance tasks, are gender-sensitive.

in Mine Action

GICHD POLICY BRIEF 5 | DECEMBER 2012

INTRODUCTION TO THE SERIES

The most important measure of performance for a mine action programme is value for money: the ratio of benefits to costs. The main determinant of whether a mine action programme delivers good value for money is not the quality of its survey and clearance technology, nor how hard the staff work, how well managers are trained, or how complete its database is. It is how well priorities are set at each level. The aim of prioritization is to achieve high value for money.

The GICHD is publishing a series of briefs on priority-setting in mine action. This Issue Brief is number 5 in the series so far, following on from:


- Issue Brief 1: An introduction to the series key terms and basic concepts: common challenges
- Issue Brief 2: The need for a national priority-setting system: components of national priority-setting systems: what each system should accomplish and how responsibilities and authorities should be defined
- Issue Brief 3: Establishing a national priority-setting system and adapting it over time: how to assess the quality of the system
- Issue Brief 4: A more detailed examination of values, decision criteria and indicators

Additional Briefs are planned for the future.


Dominic Wolsey | GICHD – GMAP

08/07/21 Page 7 © GICHD

7



GICHD



Dominic Wolsey | GICHD – GMAP

08/07/21 Page 8 © GICHD

8