



Mine Action in Chad

General presentation, June 2011

Introduction

Chad – Overview

- ▶ Population 11,2 million Area 1 284 000 km²
 - ▶ 95 % living on 30 % of the national territory
 - ▶ Population in urban zone: 25%
 - ▶ Literacy rate: 32 %
 - ▶ Girls at school: circa 1/4
 - ▶ Food insecurity conditions: 40 %
 - ▶ Access to a protected water source: 48 %
 - ▶ Access to basic sanitary services: less then 40 %
- ▶ Road network
 - ▶ 4 600 Km of paved roads
- ▶ Poverty
 - ▶ Chad is one of the poorest country (HDI)
- ▶ Economy (data 2008, source World bank)
 - ▶ Agriculture: 13,6 % GDP
 - ▶ Industry: 48,8 % GDP
 - ▶ Service: 37,5 % GDP



Mines and Explosive remnants of war in Chad

- ▶ As a result of decades of armed conflict, vast stretches of Chad national territory are contaminated by mines and explosive remnants of war.
- ▶ 50 % of the population is living in a region affected by mines and ERW contamination. + 200 000 persons are directly affected
- ▶ The presence of ERW represents a permanent danger for the population. The contamination obstructs freedom of movement, access to pasture land, water points, road network, economic hubs. The risks are worsen by the type of soil and climate conditions.
- ▶ Mine and UXO contamination has multi-sectoral implications:
 - ▶ Humanitarian
 - ▶ Social
 - ▶ Economic
 - ▶ Environment
- ▶ This contamination is a constraint on socio-economic development efforts in the affected regions.
- ▶ The Government of Chad considers mine action as a national priority, to support recovery, development and economic growth initiatives.

Progress and projection

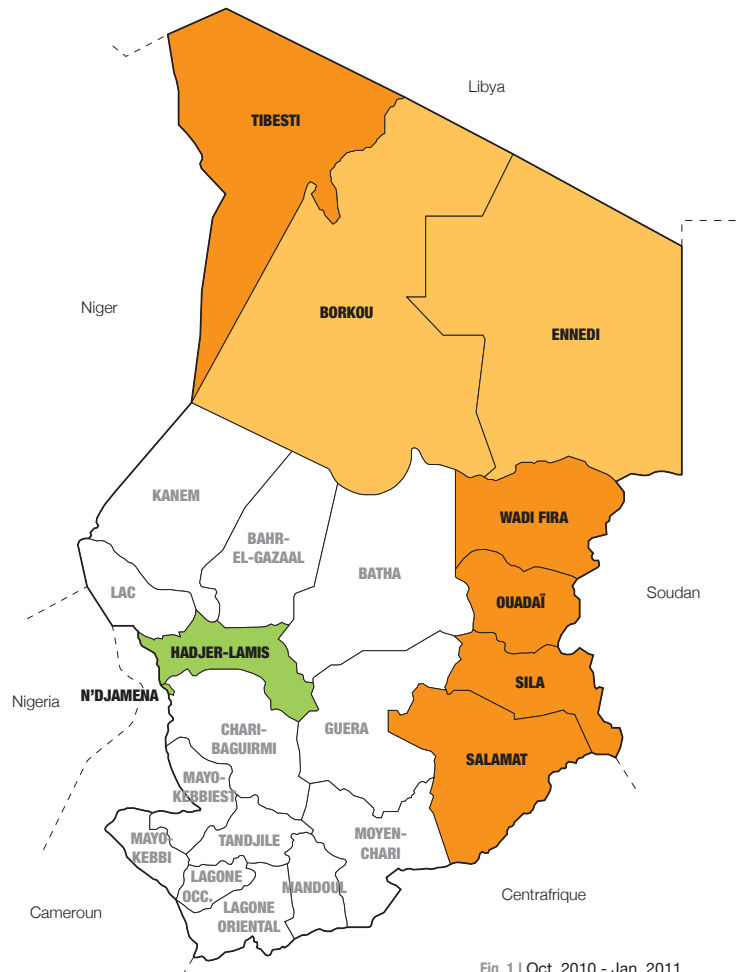


Fig. 1 | Oct. 2010 - Jan. 2011

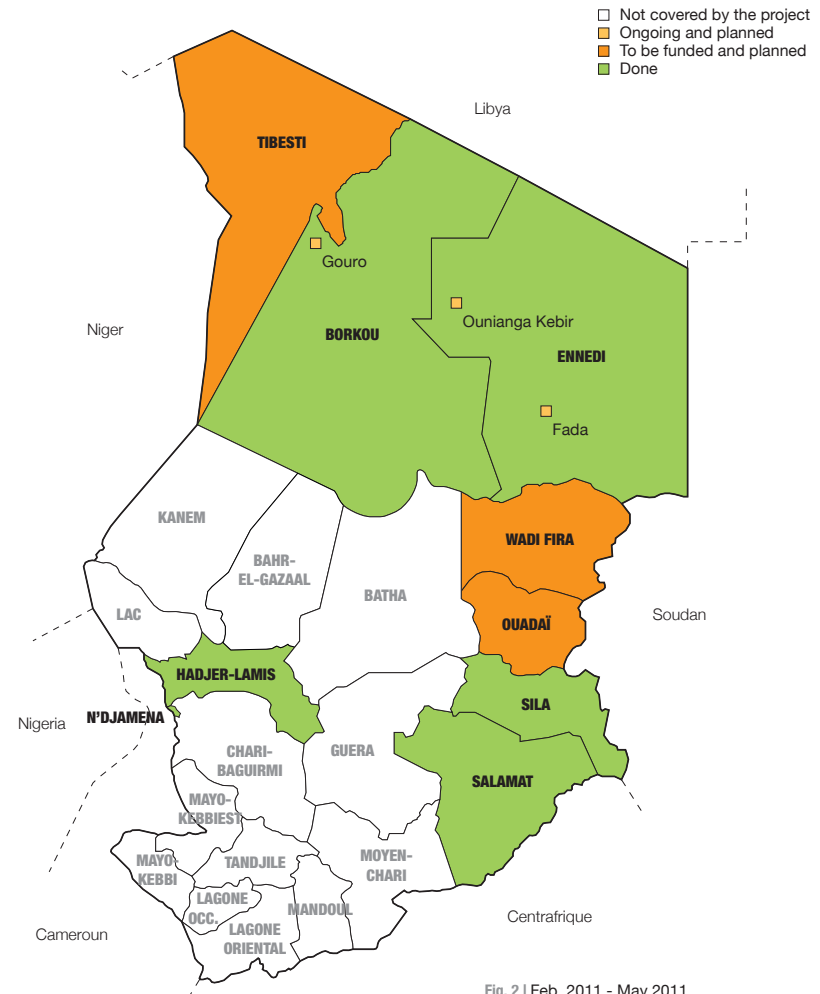


Fig. 2 | Feb. 2011 - May 2011

- Not covered by the project
- Ongoing and planned
- To be funded and planned
- Done

Data CND, IMSMA database
Analysis UNDP
Map MAG

United Nations Development Programme (UNDP)
Programme des Nations Unies pour le Développement (PNUD)

République du Tchad
Ministère de l'Économie et du Plan
Haut Commissariat National au Déminage
Centre National de Déminage

Programme financé par le Japon
Programme financé par le Japon

Survey – Illustration



Meeting of Chief of district, Faya
(preliminary survey)



Sub-munition Type PETAB 2.5 M
Chicha area

Survey & clearance – Illustration



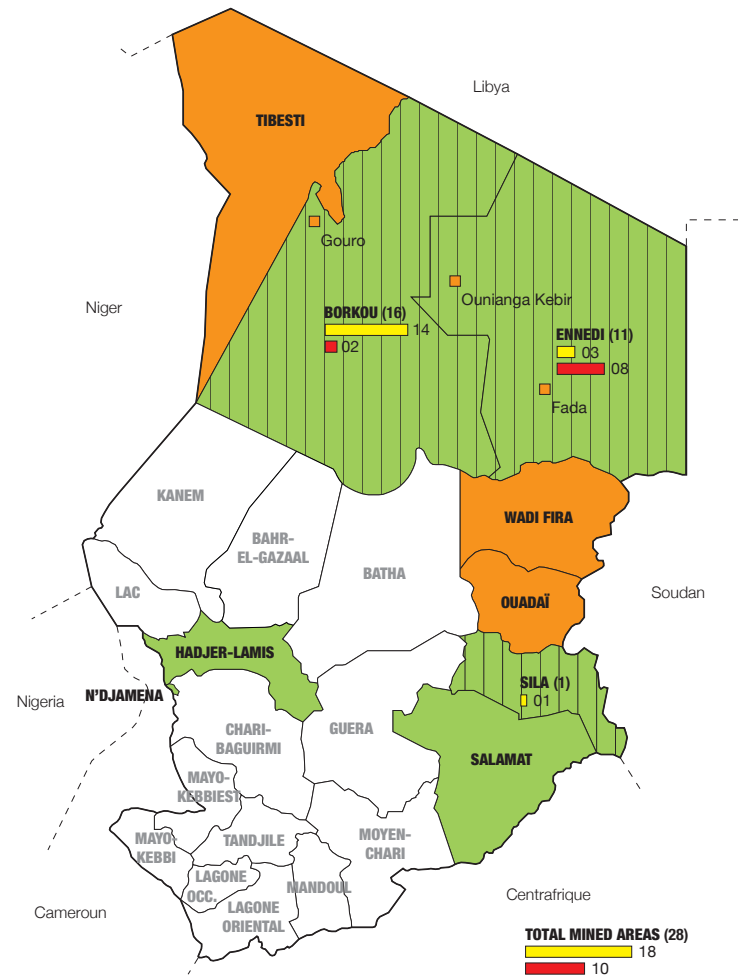
Extreme temperatures: 35 to 52 °C
Wind and sandstorm: +/- 5 days per months
Transport constraints: 100 km = 2 hours



Rest of destroyed vehicles, Wadi Doum area

MINE ACTION IN CHAD

Mined areas | UNDP/MAG | 2010-2011
Technical survey June 2010 - June 2011



Data CND, IMSMA database
Analysis UNDP
Map MAG

United Nations Development Programme (UNDP)
Programme des Nations Unies pour le Développement (PNUD)

République du Tchad
Ministère de l'Economie et du Plan
Haut Commissariat National au Déminage
Centre National de Déminage

Programme financé par le Japon
Programme financé par le Japon

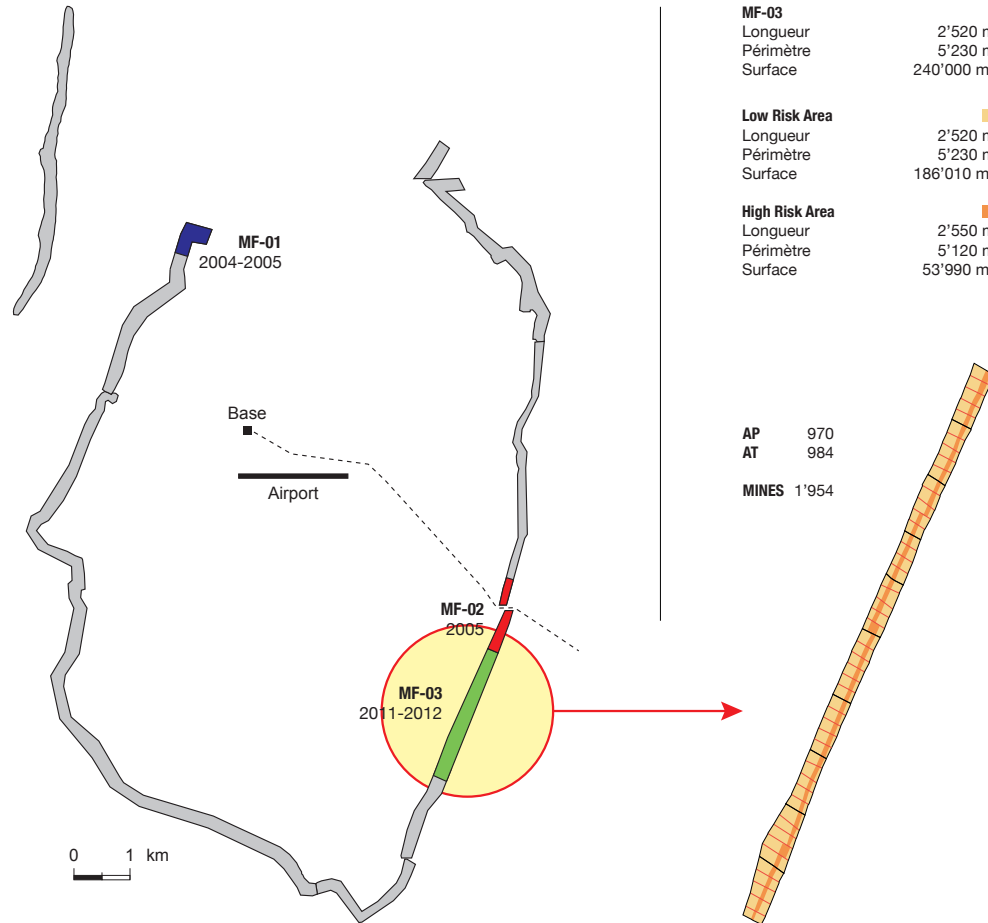


Fig. 1 | Wadi Doum Mine Field

AP 970
AT 984
MINES 1'954

Fig. 2 | MF-03 Mine Field

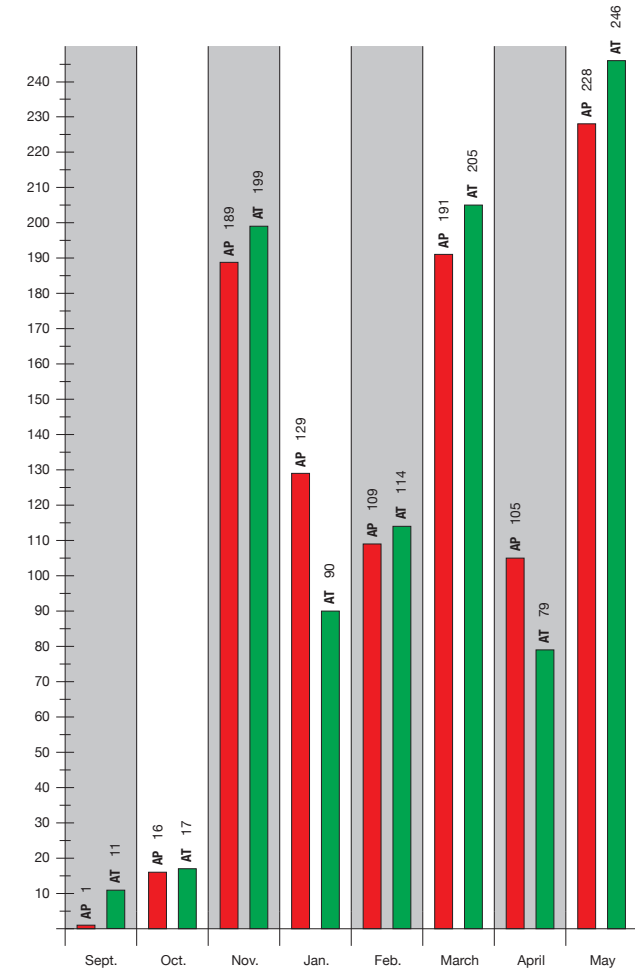


Fig. 3 | Mines removed

Data CND, IMSMA database
Analysis UNDP
Map MAG

United Nations Development Programme (UNDP)
Programme des Nations Unies pour le Développement (PNUD)

République du Tchad
Ministère de l'Économie et du Plan
Haut Commissariat National au Déminage
Centre National de Déminage

Programme financé par le Japon
Programme financé par le Japon

Clearance in Wadi Doum – Illustration



Daily security briefing



Manual clearance



Collected mines storage before destruction



Emergency medical support

Survey and clearance site - Illustration



Am-Dam



Kouba Oulanga



Manguaigne



Manguaigne

Technical survey and clearance

Within the framework of the UNDP survey and clearance project, funded by Japan, the results of the operations carried out from October 2010 to May 2011 are as follows:

- 28 mined areas are located: 24 in Borkou region, 3 in Ennedi and 1 in Sila.
- 32 743 108 m² (32,74 km²) of dangerous area have been located.
- 49 170 283 m² (49,17 km²) area marked
- 1 027 506 m² (1 km²) have been cleared.
- 2559 mines (1298 antipersonal) and 5445 UXO have been collected and destroyed.

The operator (MAG) was contracted until June 2011. To ensure the continuation of the survey and clearance operations, a US\$ 5 million contribution is required for 2011-2012. A rapid re-launching of the operations is crucial.

Période - Period	From 01/10/10 To 31/05/11	
Recorded areas	m ²	km ²
ZSD / ZD SHA / DA	32 743 108	32,74
Superficie déminée ou dépolluée Cleared area	1 027 506	1,03
Superficie marquée Marked area	49 170 283	49,17

ENE / Mines UXO/Mines	Détruits Destroyed
Type de munitions Type of munition	Quantité Quantity
UXO/AO	5335
MINES	2559
<i>Mines AP/ AP mines</i>	1298
<i>Mines AC/AT mines</i>	1261
TOTAL	7894

Priorities 2011 - 2012

Ottawa Convention – Art.5

A two-phase extension request

▶ Phase 1 Assessing the scale of the contamination and the needs

▶ Technical survey

Objectives

- ▶ To define with accuracy the remaining scale of the contamination
- ▶ To design an action plan based on reliable data

▶ Launching clearance operations in the north and east of the country

▶ Review of the land release process

▶ Designing an action plan based on the results of the technical survey

▶ Phase 2 Action plan implementation

▶ Clearance of the residual contamination

Objective

- ▶ To eliminate all AP mines from the national territory (1st phase Tibesti is not included)

National priorities

- ▶ Continuation of the technical survey
- ▶ Continuation of mine/UXO clearance operations
 - ▶ Mine clearance in the north
 - ▶ UXO clearance in the east and south-east
 - ▶ Rapid response teams
- ▶ Information management (IMSMA)
 - ▶ Maintaining and strengthening the database management
- ▶ Quality control
 - ▶ Capacity strengthening
- ▶ Land release process
 - ▶ Capacity strengthening
- ▶ Victim assistance
 - ▶ National strategy for victim assistance design

Contacts

M. Saleh Hissein Hassan

Coordinator, National Demining Center

Email : salehhisseine@yahoo.fr

Tel. (235) 66 25 25 03

M. Assane Ngueadoum

Advisor for the strategic plan and operations, program administrator, National Demining Center

Email : angueadoum@yahoo.fr

Tel. (235) 252 47 06 – (235) 628 99 04 / 995 9310 / 230 19 00

Ms Eva Faye

Institutional development specialist, UNDP

E-mail : faye.eva@gmail.com

Tel. (33) (0)6 66 41 24 88

Mine action in Chad has benefited from the support and commitments of a broad set of partners.

