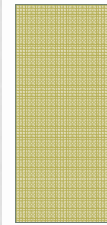


ART 5 REPORTING

13 ISC



AGENDA

- Why ?
- What ?
- How to report better?
- Amended IMAS & Art 5 reporting
- Conclusions

WHY ?

- Roadmap for better reporting
- Raise awareness
- Improve quality of submitted information
- Difference in quality between Art 7 – ISC statements – Art 5 extension requests
- Amended IMAS

WHAT ?

- Art 7 :

"Each State Party shall report to the Secretary-General ... on:

- c) To the extent possible, the location of all mined **areas** that contain, or are suspected to contain, anti-personnel mines under its jurisdiction or control, to include as much detail as possible regarding the type and quantity of each type of anti-personnel mine in each mined **area** and when they were emplaced." (Form C)

- f) The status of **programs** for the destruction of anti-personnel mines in accordance with Articles 4 and 5, including details of the methods which will be used in destruction, the location of all destruction sites and the applicable safety and environmental standards to be observed." (Form F)

HOW TO REPORT BETTER

- « areas » :
 - “the surface included within a set of lines”
 - Expresses quantity
 - « Place » vs « area »

- « all » areas
 - List(ing)
 - Benchmark for measuring progress

HOW TO REPORT BETTER

Annex I: Areas known or suspected to contain anti-personnel mines, September 2012

	State	County	Locality	Village	Hazard ID	Area (M2)	Longitude	Latitude
1	Central Equatoria	Juba	Bungu	Bele	3359	6'959	31.39381	4.672277778
2	Central Equatoria	Juba	Bungu	Bungu	3361		31.37978	4.632944444
3	Central Equatoria	Juba	Bungu	Kworijik Bungu	101-2			
4	Central Equatoria	Juba	Bungu	Kworijik Bungu	101-1			
5	Central Equatoria	Juba	Bungu	Kworijik Bungu	101-4			
6	Central Equatoria	Juba	Bungu	Kworijik Bungu	101-5			
7	Central Equatoria	Juba	Bungu	Kworijik Bungu	101-3			
8	Central Equatoria	Juba	Bungu	Bele	3362		31.39544	4.680166667
9	Central Equatoria	Juba	Dolo	Kuda	1392	50'296	31.21514	4.959638889
10	Central Equatoria	Juba	Dolo	Kuda	5723	8'526	31.19053	4.888027778
11	Central Equatoria	Juba	Dolo	Tullang	120-1	19'500	30.94229	4.841495215
12	Central Equatoria	Juba	Dolo	Gumbiri	121-1	2'244	31.08545	5.016990727
13	Central Equatoria	Juba	Dolo	Kuda	5811		31.33472	4.932611111
14	Central Equatoria	Juba	Ganji	Kuli Papa	4237		31.31226	4.537514253
15	Central Equatoria	Juba	Juba	Juba	3079		31.53611	4.838666667
16	Central Equatoria	Juba	Juba	Juba	3288	1'571	31.65228	4.245638889
17	Central Equatoria	Juba	Juba	Rejaf	1138	52'500	31.58879	4.711865
18	Central Equatoria	Juba	Juba	Kaguada	999	33'555	31.39469	4.66725
19	Central Equatoria	Juba	Juba	Juba	887	13'337	31.65644	5.024277778
20	Central Equatoria	Juba	Juba	Rejaf	2575	40'464	31.61978	4.702083333
21	Central Equatoria	Juba	Juba	Kaguada	569	2'600	31.18761	4.435861111
22	Central Equatoria	Juba	Juba	Munuki	4972	355	31.61055	4.86207559
23	Central Equatoria	Juba	Juba	Juba	3289	1'257	31.65208	4.232555556
24	Central Equatoria	Juba	Juba	Juba	71		31.70114	4.695833333
25	Central Equatoria	Juba	Juba	Rejaf	809	46'120	31.49244	4.737555556
26	Central Equatoria	Juba	Juba	Juba	882	10'000	31.04244	5.053666667

HOW TO REPORT BETTER

- « programs » (Form F)
- it has been agreed that States Parties will provide “information on the areas already released, disaggregated by release through clearance, technical survey and nontechnical survey” .

HOW TO REPORT BETTER

Summary of area addressed and explosive items destroyed, 9 July 2011 to 1 September 2012

	Area addressed by activity (square metres)				Devices found and destroyed			
	Mine clearance	Battle area clearance	Technical survey	Total	AP mines	AT mines	SAA	UXO
Central Equatoria	2,902,621	1,879,724	0	4,782,345	977	129	148,744	15,878
East Equatoria	66,772	118,010	0	184,782	109	4	23,619	1,086
Jonglei	0	75,651	0	75,651	1	0	1,626	1,412
Lakes	14,170	0	28,834	43,004	0	0	0	4
North Bahr El Ghazal	0	92,628	0	92,628	0	0	1,115	132
Unity	0	0	0	0	0	0	0	809
Upper Nile	491,521	453,694	0	945,215	256	23	240	1,096
West Bahr El Ghazal	5,414	10,659	0	16,073	1	3	600	284
West Equatoria	124,033	0	0	124,033	2	1	0	272
Totals	3,604,531	2,630,366	28,834	6,263,731	1,346	160	175,944	20,973

AMENDED IMAS & ART 5 REPORTING

- « operational » reporting vs « political » reporting
- Complimentary
- Amended IMAS offer opportunities for reporting on Art 5 implementation

AMENDED IMAS & ART 5 REPORTING

- (A)IMAS :
 - Consistent and unambiguous terminology :
 - Suspected Hazard Areas and Confirmed HA
 - Alignement with Convention obligations
 - Better classification of SHA and CHA
 - Allows better monitoring of progress
 - Databases are source for Art 7 reporting

CONCLUSIONS

- Reporting as a tool for monitoring progress
 - Clear benchmark
 - Detailed information on programs
 - Information on areas released
- Amended IMAS