

Standing Committee on Mine Clearance, Mine Risk Education, and Mine Action Technologies



June, 2010



Mine problem in Bosnia and Herzegovina

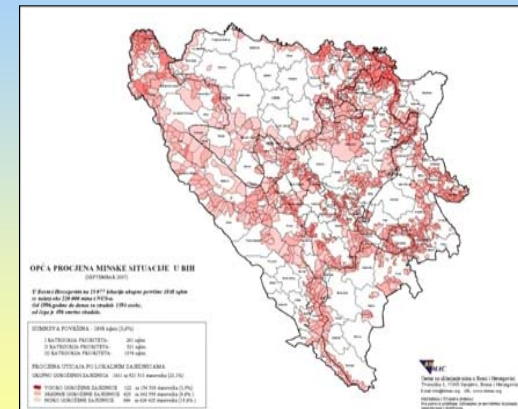


Suspect area size:

- 1996: 4.200 km² or 8,20%
- 2002: 2.090 km² or 4,09%
- 2009 : 1.555 km² or 3,04%

Mine impact on local communities (2007 general assesment):

- 1.631 impacted communities
925.513 population (23,1%)
- 122 highly impacted communities:
154.384 population(3,9%)
- 625 medium impacted communities:
342.350 population(8,6%)
- 884 low impacted communities :
424.425 population (10,6%)
- Registered minefield records:
19.138
- Estimated number of mines/UXO:
220.000
- Number of suspected locations: 11.443



Bosnia and Herzegovina Mine Action Strategy 2009-2019

VISION

BOSNIA AND HERZEGOVINA FREE OF MINES by 2019.

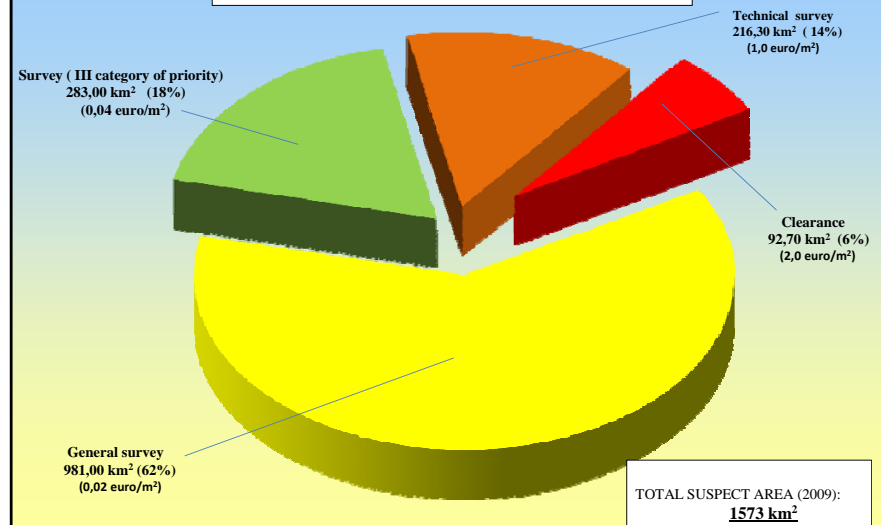
MISSION

Ensure conditions for the conduct of a stable and efficient mine action program, in order to establish safe environment for normal and prosperous life of all citizens in BiH, with mine victims fully integrated in community.

•

Bosnia and Herzegovina Mine Action Strategy 2009-2019

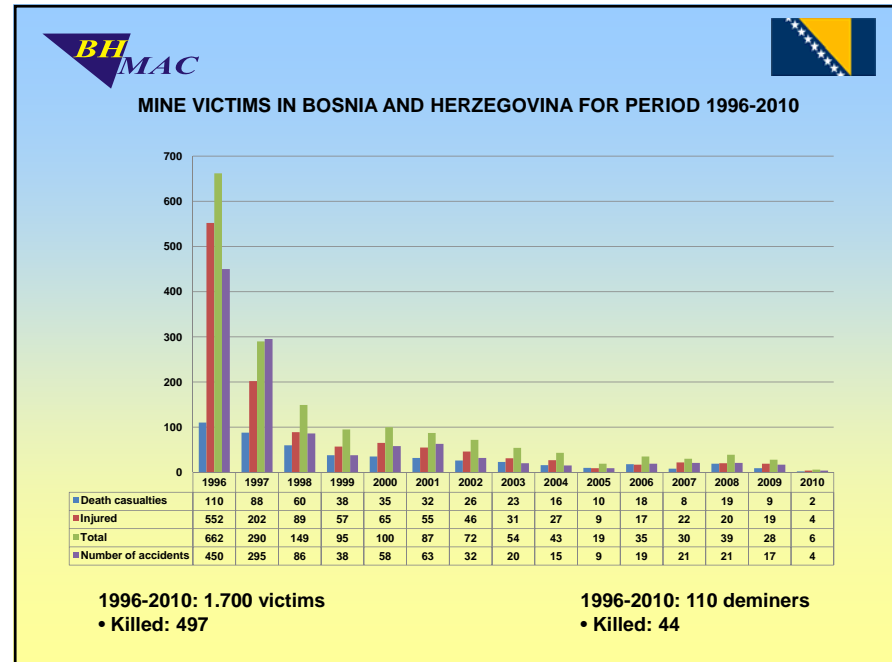
LAND RELEASE-TECHNICAL OPTIONS



SIZE OF SUSPECTED AREA IN BOSNIA AND HERZEGOVINA (01.01. 2010)

ADMINISTRATIVE REGION	Total suspected area (m2)	Suspected area per priority category (m2)		
		I category	II category	III category
UNA-SANA CANTON	131.643.435	22.633.947	74.489.010	34.520.478
POSAVINA CANTON	38.243.776	8.808.843	20.006.083	9.428.850
TUZLA CANTON	86.256.407	19.938.642	26.743.141	39.574.624
ZENICA-DOBOJ CANTON	136.755.728	16.814.115	19.234.006	100.707.607
BOSNIAN PODRINJE CANTON	67.758.487	1.596.288	14.378.632	51.783.567
CENTRAL BOSNIA CANTON	187.846.897	27.487.041	40.073.069	120.286.787
HERZEGOVINA-NERETVA CANTON	196.147.060	17.160.408	47.393.183	131.593.469
WEST HERZEGOVINA CANTON	1.155.082	0	0	1.155.082
CANTON SARAJEVO	99.073.414	7.781.621	14.659.713	76.632.080
CANTON 10	166.072.677	15.851.743	32.792.114	117.429.320
FEDERATION OF BA	1.110.952.963	138.072.148	289.768.951	683.111.864
REPUBLIC OF SRPSKA	409.009.998	83.299.980	123.412.115	202.297.903
DISTRICT BRCKO	35.382.700	13.333.800	9.677.540	12.371.360
BOSNIA AND HERZEGOVINA	1.555.345.661	234.705.928	422.858.606	897.781.127

www.bhmac.org

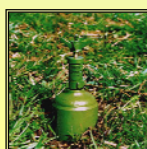




**ACCOMPLISHED
1996-2009**



2002-2010	SUSPECTED AREA REDUCTION (m ²)	GENERAL SURVEY (m ²)	CLEARANCE (m ²)	TEHNICAL SURVEY (m ²)	HUMANITARIAN DEMINING (m ²)	FOUND AND DESTROYED		
						AP MINES	AT MINES	UXO
2002	55.594.000	49.592.000	5.787.000	215.000	6.002.000	1.532	251	1.575
2003	57.433.000	50.805.000	6.410.000	218.000	6.628.000	1.495	156	1.066
2004	472.340.000	463.409.882	6.612.716	2.317.402	8.930.118	2.987	209	1.438
2005	158.100.000	147.492.401	4.009.051	6.598.548	10.607.599	2.120	173	1.475
2006	239.000.000	228.733.915	3.299.567	6.966.518	10.266.085	3.506	164	1.499
2007	156.700.000	146.370.000	2.343.341	7.986.659	10.330.000	2.149	204	1.120
2008	84.830.000	70.063.580	3.163.958	11.602.462	14.766.420	2.567	229	3.117
2009	128.200.291	115.455.715	1.940.646	10.803.930	12.744.576	2.112	150	877
UKUPNO	1.352.197.291	1.271.922.493	33.566.279	46.708.519	80.274.798	18.468	1.536	12.167



**Plan 2009
Planned/Accomplished**



Activity	Strategic plan	Realization	%
General and Systematic survey (Reduction)	115,75 km ²	115,35 km ²	99,65
General survey (Project pripering for demining)	79,40 km ²	71,16 km ²	89,62
Prohibition measurs/III category	5 km ²	2,69 km ²	53,80
Tehnickal survey	21,63 km ²	10,81 km ²	49,97
Clearance	9,27 km ²	1,94 km ²	20,92
Permanent marking (signs)	5.000	1.421	28,42
Urgent marking (signs)	20.000	9.796	48,98
Quality control (number of inspections)	11.000	4.467	40,60



**Number of found mines per hectare:
11,66**





Plan 2010 Planned/Accomplished



Activity	Strategic plan	Realization	%
Systematic survey	115,75 km ²	55,00 km ²	
General survey	79,40 km ²	17,00 km ²	
Prohibition measures/III category	5 km ²	0,00 km ²	
Tehcnical survey	21,63 km ²	3,00 km ²	
Clearance	9,27 km ²	1,00 km ²	
Permanent marking (signs)	5.000	500	
Urgent marking (signs)	20.000	2.500	
Quality control (number of inspections)	11.000	1.500	



Mine action capacities



- * 3.100 accredited deminers (1.396 employed);
- 35 akredited organizations

Equipment:

- * 1336 metal detectors;
- * 86 dogs;
- * 37 accredited machines



*** Estimated annual productivity: 35-40 km²**



FUNDING

Local allocations (40%)

- * State budget;
- * Entities, cantons and local communities;
- * Private sector (infrastructure).



International community (60%)

- * ITF;
 - * EU;
 - * UNDP, UNICEF;
 - * Individual donor countries.
- Majority of donations channeled through ITF bidings.



Austrian
Development Cooperation



www.bhmac.org

Thank you!

Questions???