



KINGDOM OF CAMBODIA


**PRESENTATION TO THE STANDING COMMITTEE OF CLEARING MINED AREAS
PROGRESS MADE OF ARTICLE 5
GENEVA, 21-25 June, 2010**

By:
Pum Sopha Komkol,
Deputy Secretary General to the Cambodian Mine Action Authority
Email: pumpkomkol@cmmaa.gov.kh

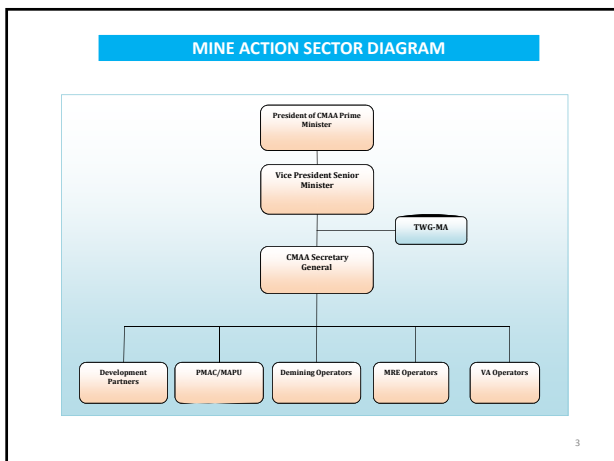
23-06-10 1

Content:

1. Mine/ERW background;
2. Progress made since the Second Review Conference;
3. Objectives achieving in 2010;
4. Other objectives in accordance with ER;
5. Challenges and Opportunity.



23-06-10 2



Brief about Demining Personnels

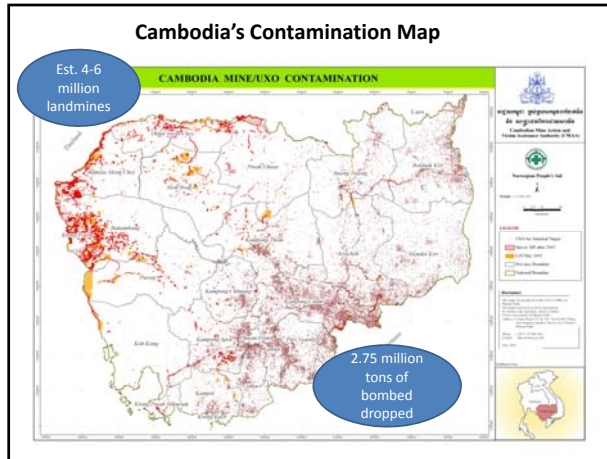
There are currently over **5,000 deminers** in Cambodia as follow:

| | |
|-------------------|------------------------------------|
| CMAC | 2,300 staff |
| RCAF | 1,310 staff |
| HALO Trust | 1,200 staff |
| MAG | 475 staff |
| Police | 1,000 staff (ERW reporting) |

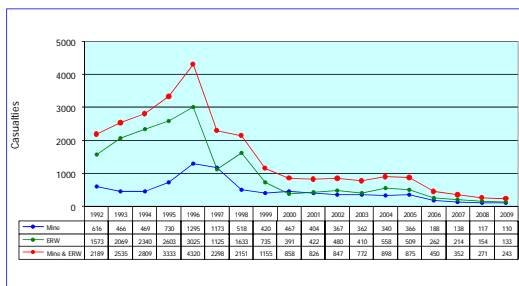
4

1. Background of Landmines/ERW Problems

- WORLD WAR II
- FRENCH INDOCHINA WARS
- VIETNAM WAR
- 1970 – 1975: Rebellion against Lon Nol and rise of Khmer Rouge.
- 1975 – 1979: Border incursions into Vietnam by Khmer Rouge.
- 1979 – 1998*: Guerrilla war through out Cambodia
- 1994 – 1995: Renewed Khmer Rouge offensives
- * Four warring factions involved in intense fighting from 1979 to 1993. Heavy use of landmines during this period.



Landmines/ERW Casualties from 1992 to 2009



2. Progress made since the 2nd RC:

Total progress made by CMAC, RCAF, MAG and HALO Trust (Jan-May 2010)

- Land cleared: 22,990,020 M2
- APM destroyed: 17,993
- ATM destroyed: 414
- UXO destroyed: 59,871

Total progress made by CMAC, RCAF, MAG and HALO Trust (1992-May 2010)

- Land cleared: 558,932,601 M2
- APM destroyed: 878,152
- ATM destroyed: 20,366
- UXO destroyed: 1,967,492

3. Objectives achieving in 2010

- 39,400,173 square meters of full clearance;
- CMAS Land Release to be followed by operators;
- 2011 Annual Clearance Plan to be developed;

23-06-10

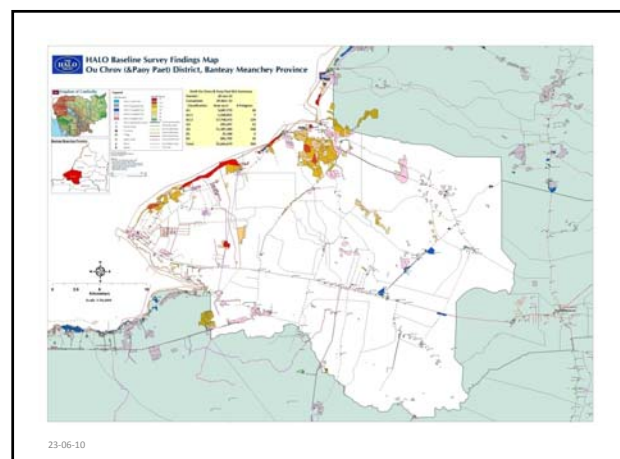
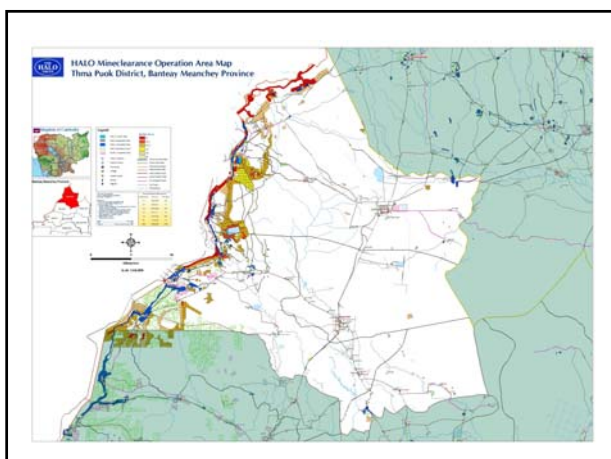
9

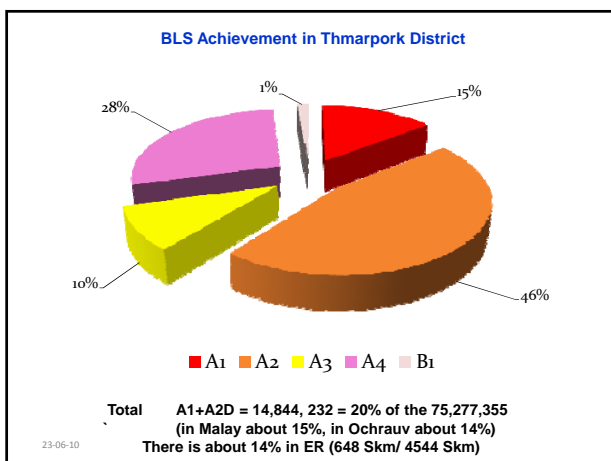
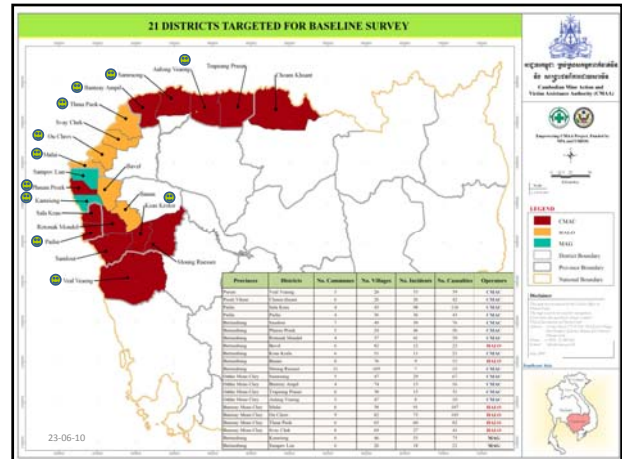
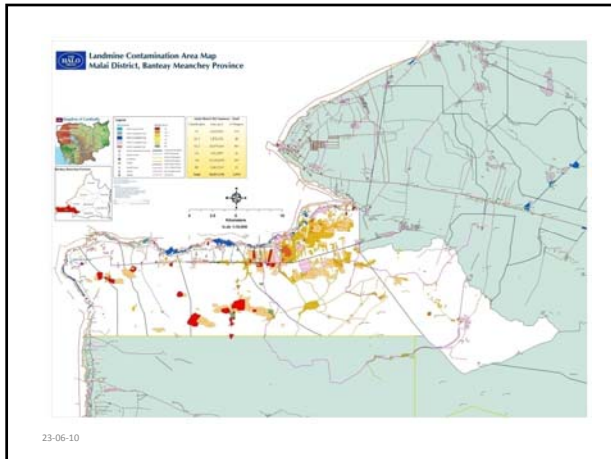
BLS progress update

- BLS (21 in 2010, 41 in 2011 & 60 in 2012 as planned)
- BLS progress updated:
- Field work in 11 Districts had been completed;
- Data is on the process of transferring to DBU/CMAA;
- The rest will be completed on time;
- Data will be available earlier next year
- The second phase district of BLS have been selected (41 districts for 2011).



10





Deployment and Progression made

| No. | District | Province | Accident No. | Casualty No. | Village No. | Deployment Status | Proposed Deployed By |
|-----|----------------|-------------------|--------------|--------------|-------------|--|----------------------|
| 1 | Malai | Ranong | 32 | 28 | 20 | Survey Completion | CMAC/BLS#10 |
| 2 | Tham Apsorn | Phu Phan | 26 | 43 | 26 | CMAC/BLS#03USA, BLS#110RT, BLS#120RT | CMAC/BLS#12 |
| 3 | Banmang | Older Mueangchay | 29 | 67 | 47 | Survey Completion | CMAC/BLS#04 |
| 4 | Saranying Arng | Older Mueangchay | 13 | 16 | 74 | Survey Completion | CMAC/BLS#05 |
| 5 | Phongong Prach | Older Mueangchay | 13 | 31 | 38 | CMAC/BLS#05 GMM | CMAC/BLS#11 |
| 6 | Wong Veang | Older Mueangchay | 5 | 10 | 47 | Survey Completion | CMAC/BLS#06 |
| 7 | Sala Krau | Krong Palin | 98 | 116 | 43 | CMAC/BLS#10NDP, BLS#102NDP, BLS#103NDP, BLS#104NDP, BLS#105NDP, BLS#106NDP, BLS#107NDP, BLS#108NDP, BLS#109NDP, BLS#110NDP | CMAC/BLS#02 |
| 8 | Palin | Krong Palin | 36 | 43 | 36 | Survey Completion | CMAC/BLS#01 |
| 9 | Kamhong | Buttambang | 53 | 75 | 46 | Survey Completion | MMG |
| 10 | Banboud | Buttambang | 50 | 76 | 49 | suspended 21 April 2010, team moved to Sala Krau | CMAC/BLS#03 |
| 11 | Phruai Prook | Buttambang | 46 | 56 | 24 | Survey Completion | CMAC/BLS#09 |
| 12 | Botanak Boudol | Buttambang | 41 | 59 | 37 | CMAC/BLS#07 NPA, BLS#08 NPA | CMAC/BLS#13 |
| 13 | Sampov Lan | Buttambang | 18 | 21 | 26 | MMG/BLS#01, MMG/BLS#02 | MMG |
| 14 | Bavet | Buttambang | 12 | 22 | 82 | Not yet deployed | HALO |
| 15 | Kaok Krao | Buttambang | 11 | 21 | 51 | Survey Completion | CMAC/BLS#07 |
| 16 | Banan | Buttambang | 9 | 12 | 76 | Not yet deployed | HALO |
| 17 | Muang Ruesee | Buttambang | 7 | 15 | 103 | CMAC/BLS#04NDP, BLS#06NDP, BLS#14NDP, BLS#15NDP, BLS#16NDP, BLS#17NDP, BLS#18NDP, BLS#19NDP, BLS#20NDP | CMAC/BLS#08 |
| 18 | Mala | Banley Mueangchay | 91 | 107 | 38 | Survey Completion | HALO |
| 19 | Du Chrov | Banley Mueangchay | 75 | 103 | 82 | Survey Completion | HALO |
| 20 | Phra Phok | Banley Mueangchay | 60 | 82 | 63 | Survey Completion | HALO |
| 21 | Ray Chok | Banley Mueangchay | 27 | 41 | 69 | HALO/6 BLS Teams (1,2,3,4,5,6,7,8,9,10) | HALO |

23-06-10

Update on the objectives in the ER:

Workplan will be revised base on the cleared picture for BLS;

Schedule & Budget for the next 10 years;

The RCAF received the Accreditation from CMAA on 29 December 2009;

NMAS on the process of approval;

Action plans for MA will be aligned with NMAS.

23-06-10

17

4. Future objectives to achieve in accordance with ER

2011

- BLS Phase 2 (41 districts) will be completed;
- 40,188,176 square meters of full clearance;
- 2012 Annual Clearance Plan will be developed;
- BLS progress updated provided to APMBT States Parties.

2012

- BLS Phase 3 (60 districts) will be completed;
- 40,991,940 square meter of full clearance;
- 2013 Annual Clearance Plan will be developed;
- Extension Request Work plan revised.

23-06-10

18

5. Challenge and opportunity:

Challenge:

30 million USD/ annum forecast as required over the next 10 years. Although difficult to confirm it appears that approximately 15 million USD will be provided from existing donors in 2010.

Baseline Survey. Funding for Phase 2 and Phase 3 about 2.4 millions a year for Baseline Survey, to cover the remaining contamination throughout Cambodia.

Border Regions. continue to pose challenges to both clearance and BLS activities in some of border regions.

Maintaining Capacity. 2009-2010 saw reductions in capacity. Consistency of funding over multi years will help keep the strong technical capacity available for mine clearance in Cambodia.

23-06-10

19

Opportunity:

Baseline Survey data will assist in better defining the remaining contamination and improving cost estimates.

Application of Land Release methodologies will promote the use of survey and clearance only on defined BLS polygons.

BLS will also allow a revision of planning and prioritization systems in order to target assets in high impact areas and on BLS polygons.

NMAS compliant with Article 5 and other national strategic documents. Donors to aligned assistance with national instruments.

Extending the accreditation to further elements of the RCAF would provide an increase in demining resources.

23-06-10

20

Thanks for your attention!



Any question?