

Panel

- Overview – Ian Mansfield, GICHD
- Methodologies – Tim Lardner, GICHD
- Operator – Hans Eric Haug, NPA
- National – Miljenko Vahtaric, CROMAC

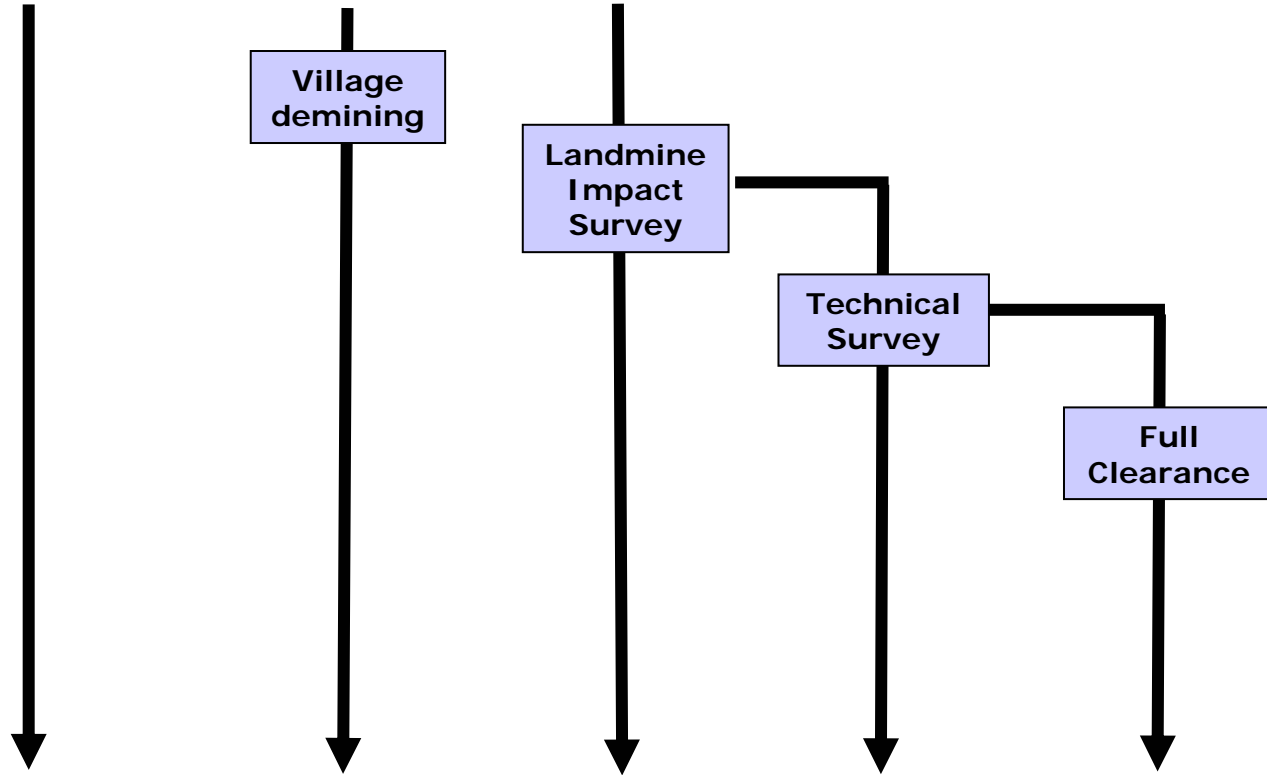
Article 5 – AP MBC

- Identify all known or suspected mined areas.
- Ensure all mined areas perimeter marked, monitored and fenced.
- Destroy all anti-personnel mines in mined areas under its control

The Problem

- General assessments and impact surveys have led to large areas of "suspect" land, but in reality much less is actually mined
- Anti-vehicle mines and ERW also likely to be present
- Good procedures in place for full clearance, but not land release

SUSPECTED HAZARD AREA (SHA)



RELEASED LAND



Terminology

- International Mine Action Standards
 - General Mine Action Assessment
 - Technical Survey
 - Area Reduction
 - Cancelled Area
 - Cleared Area
- Need for clarification
 - Different meanings
 - Different definitions

Practical Measures

- Amend IMAS
- ICBL guidelines
- Country case studies
- NGO operators
- Auditable trail
- Liability issues



To clear... or not to clear? To release... or not to release?





How much is actually contaminated?

- 15 countries
- 290 km²
- 6 million items of ordnance
- %?



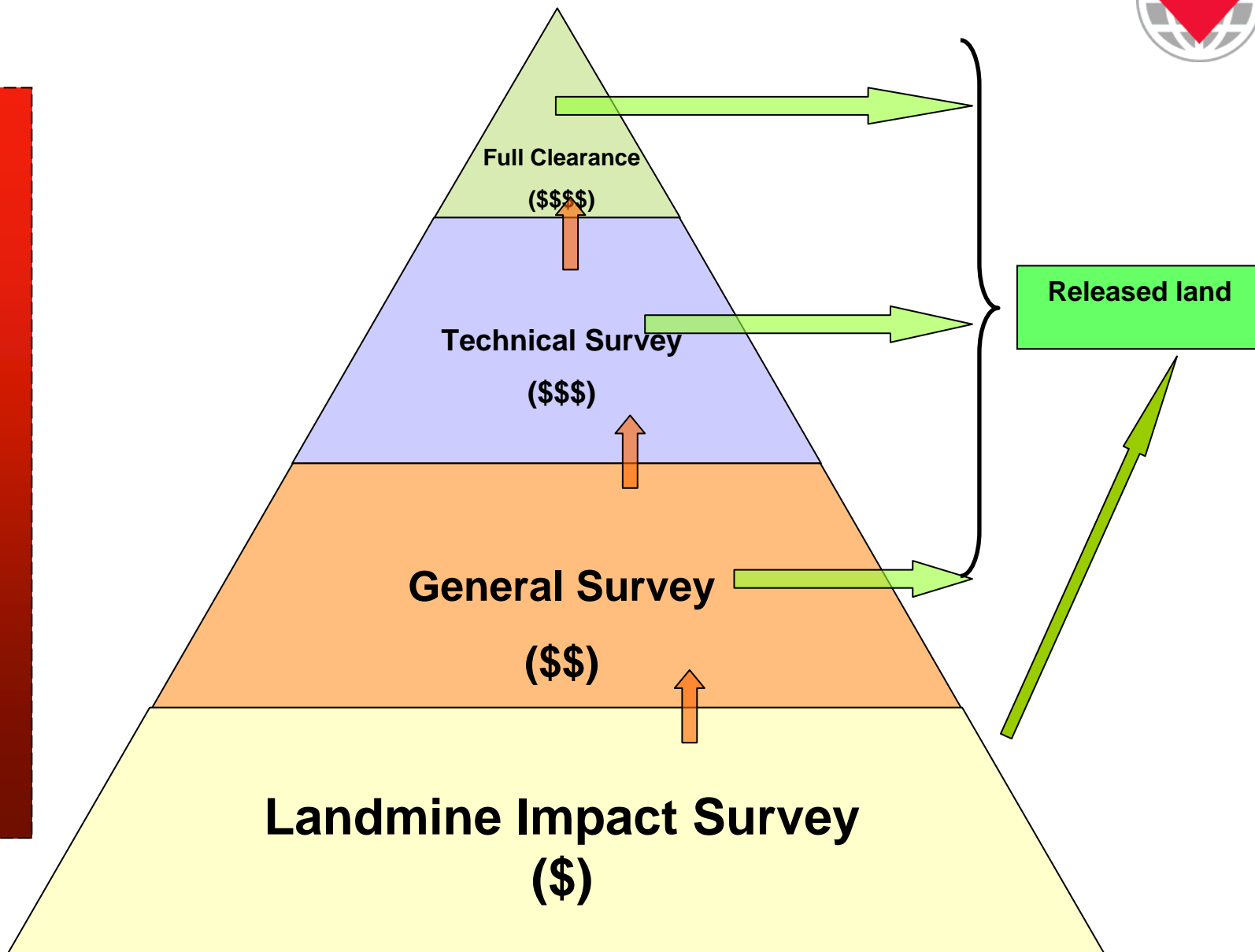
So what?

Treaty obligations

- *“To ensure the destruction of all anti-personnel landmines under its jurisdiction or control”*
- **But, which line do we take?**
 - Guilty until proven innocent?
 - Innocent until proven guilty?
- **Our responsibility to demonstrate that land is NOT contaminated by mines and ERW... by whatever means.**

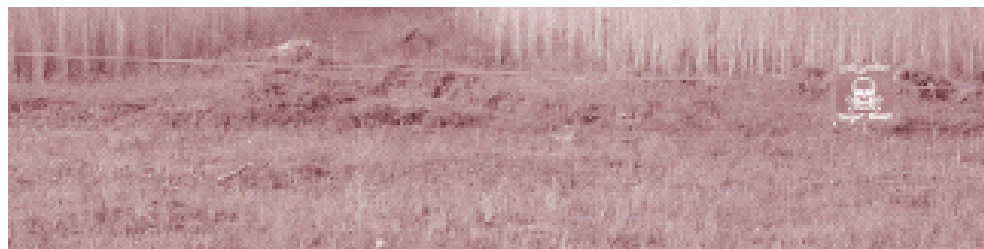
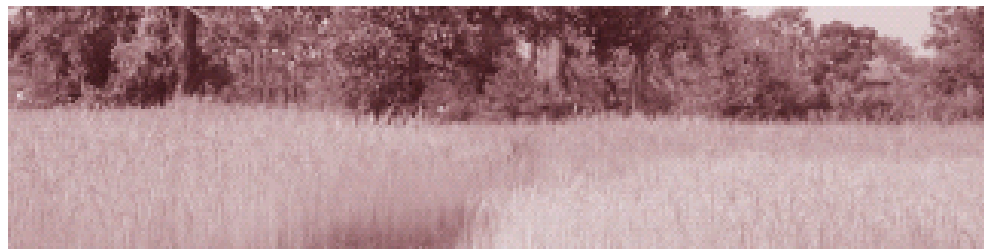


GMAA



**LAND RELEASE:
A GUIDE FOR MINE AND ERW AFFECTED COUNTRIES**

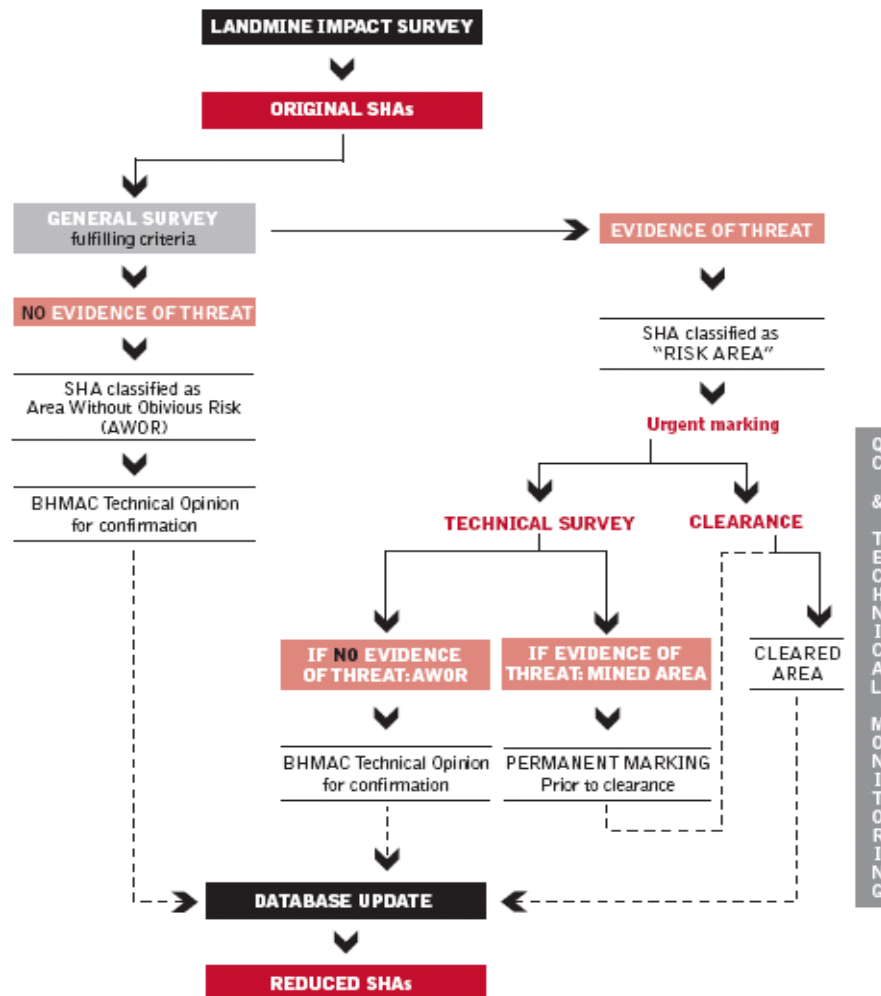
NOVEMBER 2007



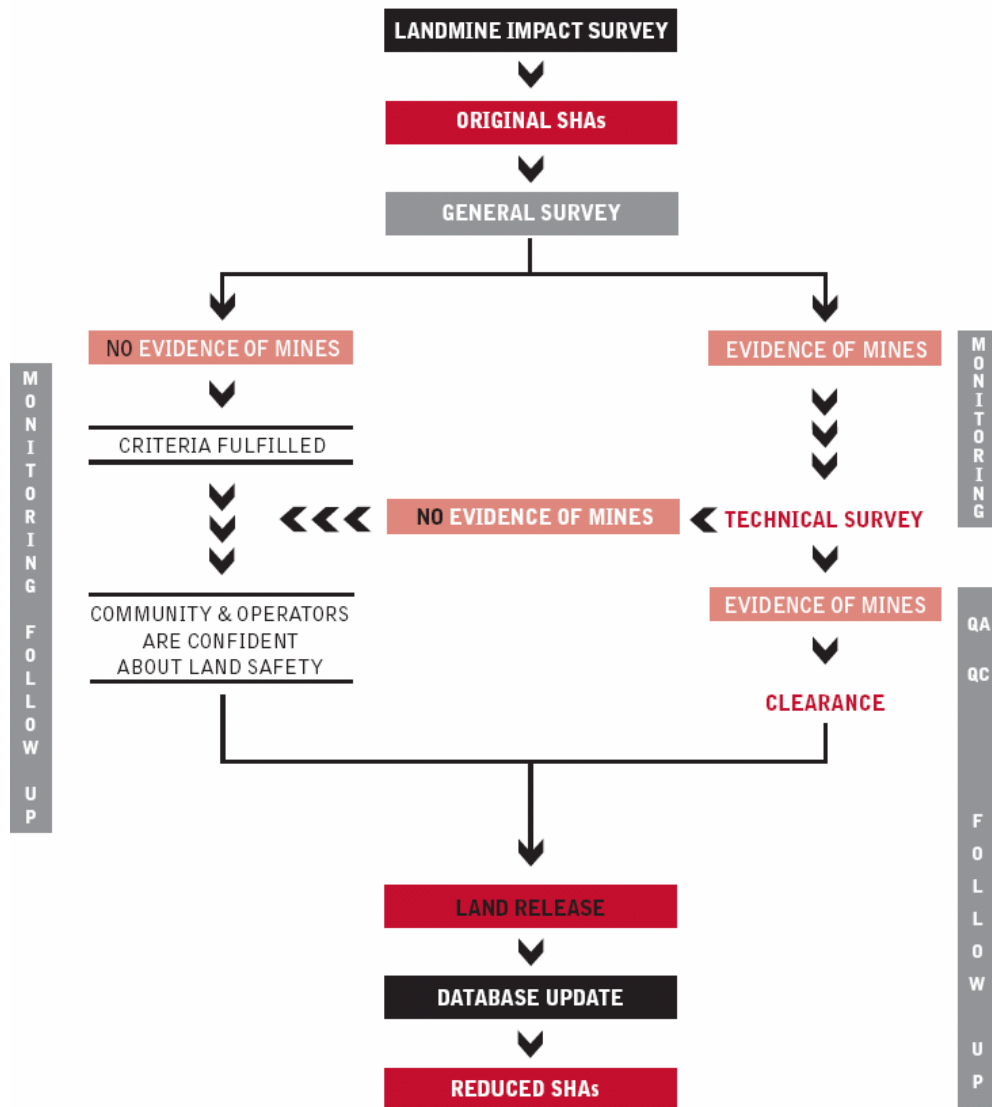
Specific land release model



Bosnia & Herzegovina | Process for Land Release



Generic land release model



Criteria



Criteria

Bosnia & Herzegovina	<p>Loosely time-bound criteria leaving room for variable interpretations and subjective decision making.</p> <ul style="list-style-type: none">> Area used intensively during the post-war period with no accidents.> Area needs to be ploughed, excavated or at least disturbed down to a minimum depth of 10 cm.
Cambodia	<p>Uses two layers of land release; one is cancellation and the other is reclaimed land. An area needs to be cleared to achieve cancellation. All areas subject to reconstruction work will need to be cancelled. Criteria for reclamation of land include:</p> <ul style="list-style-type: none">> Area used by communities for a period of three years.> No accident occurred during this period.
Croatia	<p>A detailed and well documented system. Release criteria include:</p> <ul style="list-style-type: none">> No original data on mine laying exists.> No previous accidents.> No previous fortification facilities/barriers showing mine/ERW existence.> The area has not been used for fighting or military purposes.> No detonation in areas exposed to fire.> No indicators of mines (marking, casing material etc).> The above criteria are confirmed by survey teams and through conversations with contact persons.> If area is in use, analyse and document the use of the area. Confirm that there have been no detonations by people, animals or fire and no evidence of mines/ERW has been seen by the users.
Iraq	<p>Details of each criteria for land release have not been fully developed and there is scope for subjective decision making. The criteria used in this process are:</p> <ul style="list-style-type: none">> Land release depends on the intended use of land.> The duration since the land was first used by villagers.> Availability of mine signs.> Distance from nearest accident to the area in question.> The landowner's approval that the area is free from mines/ERW.

Article 5: Practical and Efficient Means to Release Suspected Areas

Panel Discussion



Broad principles

- 1. A formal, well-documented and recorded process of investigation into the mine/ERW problem;
- 2. **Well-defined and objective criteria for the reclassification of land;**
- 3. A high degree of community involvement and acceptance of the decision making;
- 4. A formal process of handover of land prior to the release of land;
- 5. An ongoing monitoring mechanism after the handover has taken place;
- 6. A formal national policy addressing liability issues; and
- 7. A common set of terminology to be used when describing the process.

GICHD way ahead



- **Continued research**
- **Continue broader development of global model for land release**
- **Work with national programmes to develop/improve land release processes**

Questions?

