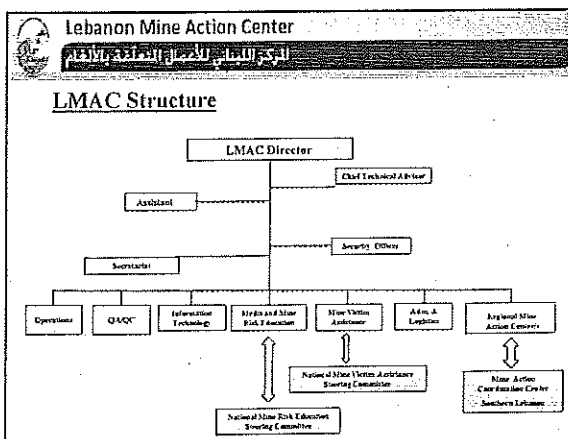
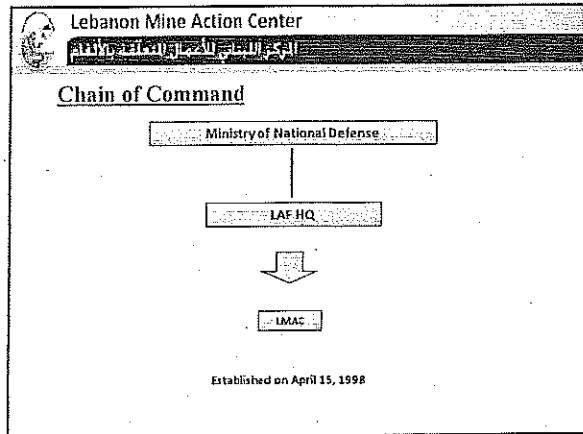
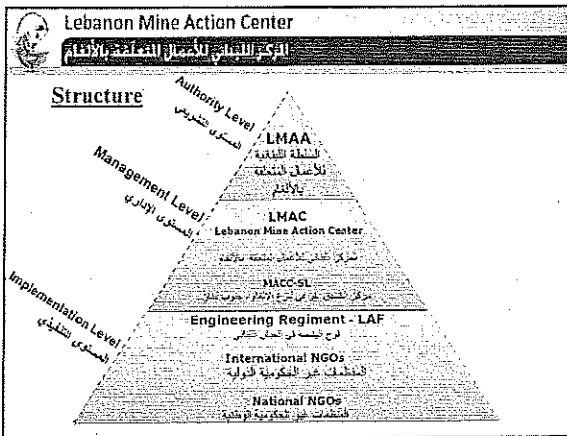


Lebanon Mine Action Center

Overview

- Mine Action Structure
- LMAC Structure
- Scope of Mine/ERW Problem
- Clearance Update
- Vision, Mission and Objectives
- Mine/ERW Victims
- Challenges, Gov Leb and International Support



Lebanon Mine Action Center

Scope of Mine/ERW Problem

Three phases

- 1- After Year 1990
- 2- After Year 2000
- 3- After July 2006 Hostilities

LIS Results (2003)=150 Sq Km

Results As of Oct 1st, 2008

550,000 Mines - 4,573 MF

120,000 mines removed - 2,583 MF

430,000 mines remained - 1,990 MF

(370,000 Mines on Blue line - 1,010 MF)

Cluster Munitions

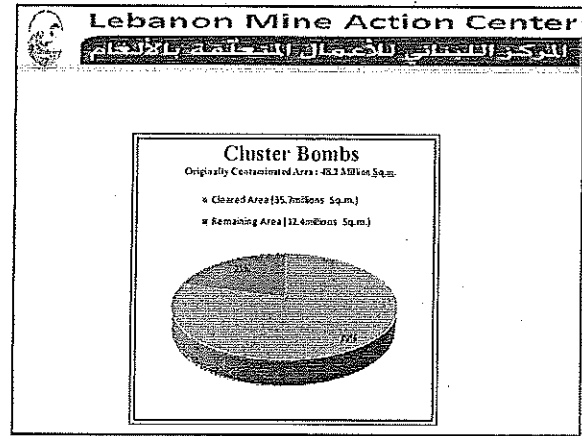
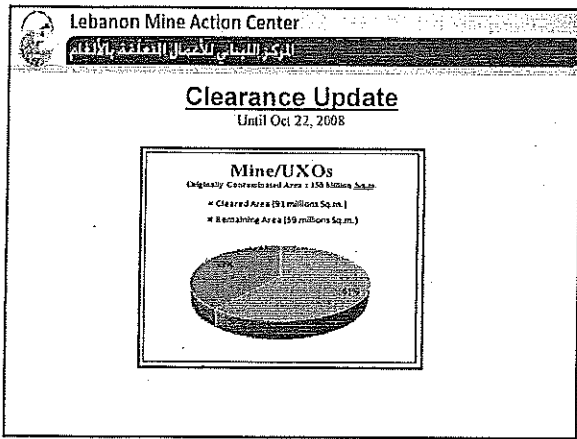
1058 Confirmed CB Strike Locations

48,238,560 SqM Contaminated Area

35,741,560 SqM Cleared/Cancelled/Released

12,497,000 SqM Remaining

147,886 Cluster Bomb Destroyed



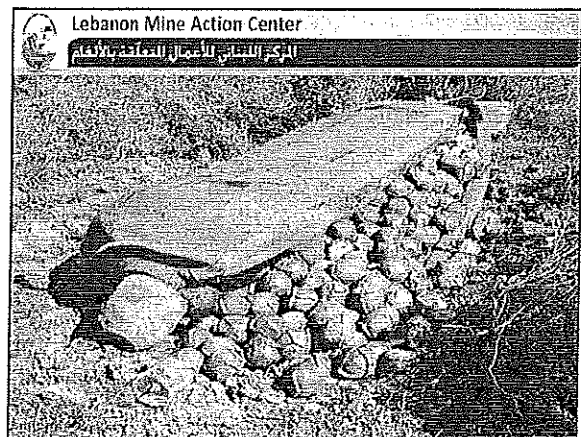
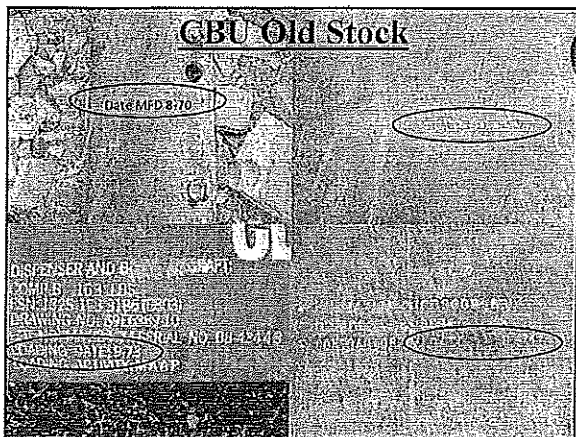
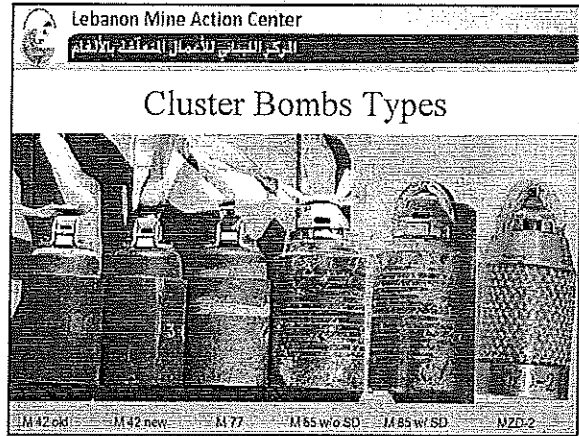
Lebanon Mine Action Center
 المركز اللبناني لعمليات إزالة الألغام

Clearance Operations

Achievements after August 2006
 Total up to Oct 22, 2008

We can see that the Lebanese Army is the Backbone of mine & UXO clearance in Lebanon

	CBs	Aircraft Bombs	Aircraft Missiles	Mines	Rockets & UXOs	Others
LAF	54670	326	43	238	30573	56462
MAG	18578	32		3	201	120
SRSA	5743	7	2	4	392	157
BacTecInt	18308	20		5993	914	353
NPA	1739				7	6
Armor Group	6862			5	105	93
IB	466				5	18
New Zealand	1563				51	12
FSD	451				31	11
DCA	1763				13	34
UNIFIL	27576	92		239	30104	284
Total	147807	452	44	5702	35474	67598



Lebanon Mine Action Center
 المرکز اللبناني لعمليّة إزالة الألغام

Vision
 Lebanon free from the impact of landmines/ and Explosive Remnants of War.

The figure consists of three maps of Lebanon, each representing a different stage of mine action. The first map, labeled 'Before', shows a large area of the country shaded in black, representing contaminated land. The second map, labeled 'Now', shows a smaller shaded area, indicating progress in clearing land. The third map, labeled '2012', shows an even smaller shaded area, representing the goal of a Lebanon free from the impact of landmines and explosive remnants of war.

Lebanon Mine Action Center
 المرکز اللبناني لعمليّة إزالة الألغام

Mission

To maintain a sustainable mine action capability able to mitigate all high and medium impacted communities in 5 years through clearance, mine-risk education, mine victim assistance and advocacy according to National, International Standards and Mine Action best practices .

Lebanon Mine Action Center
 المرکز اللبناني لعمليّة إزالة الألغام

Objectives

- >Humanitarian Demining: Reduce the impact of 100% of the high and medium impacted communities.
- >Mine Risk Education: Design, plan, provide and implement a risk education system that reaches all affected areas of Lebanon.
- >Mine Victim Assistance: Provide assistance to mine/UXO victims in all aspects and support activities to provide them with their full legal rights.
- >Advocacy and Regulatory Functions: Achieve the End-state strategy through the creation of strategic and transparent policies and plans.
- >Resource Mobilization: Adopt a dynamic strategy and a door to door transparent policy for effective resource mobilization.
- >Communications and Public Relations: Boost image and goodwill through the adoption of a coherent public outreach system at the international and national level.

Lebanon Mine Action Center
 المرکز اللبناني لعمليّة إزالة الألغام

Demining & Clearance of ERWs

The chart shows a timeline from 2005 to 2017. It features four horizontal bars representing different demining and clearance activities:

- ER Clearance:** Starts in 2005 and ends in 2008.
- UXO Clearance:** Starts in 2005 and ends in 2007.
- Demining South Lebanon:** Starts in 2005 and ends in 2008.
- Demining Mount & North Lebanon:** Starts in 2005 and ends in 2017.

 A note indicates 'With the exception of the Blue Line'.

Lebanon Mine Action Center
 المرکز اللبناني لعمليّة إزالة الألغام

Current Operational Teams

The organizational chart shows the structure of the Lebanon Mine Action Center (LMAC). At the top is LMAC, which is supported by several parent organizations: USAID, UNIFIL, UNDP, UNICEF, and the Lebanese Armed Forces (LAF). Below these are various operational teams, including:

- UXO Clearance
- ER Clearance
- Demining South Lebanon
- Demining Mount & North Lebanon
- Mine Risk Education (MRE)
- Mine Victim Assistance (MVA)
- Advocacy and Regulatory Functions (ARF)
- Resource Mobilization (RM)
- Communications and Public Relations (CPR)

- 63 Operational teams
- Lebanese Armed Forces Teams
- UNIFIL (23 Teams) (operational demining in the area of localization)

Lebanon Mine Action Center
 المرکز اللبناني لعمليّة إزالة الألغام

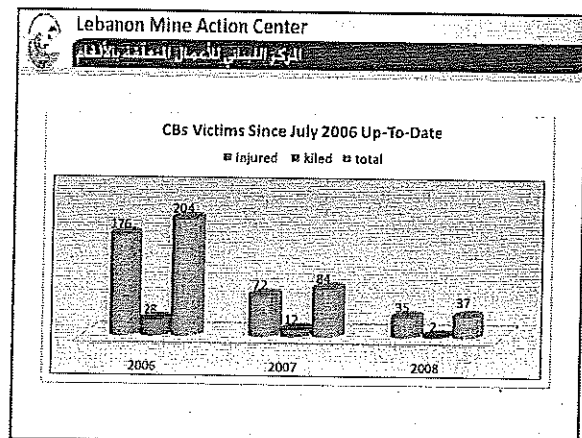
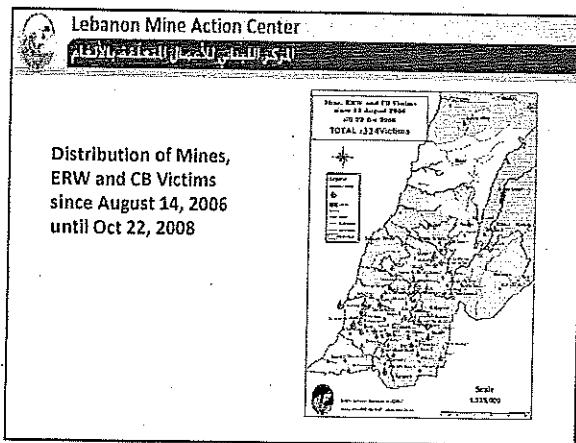
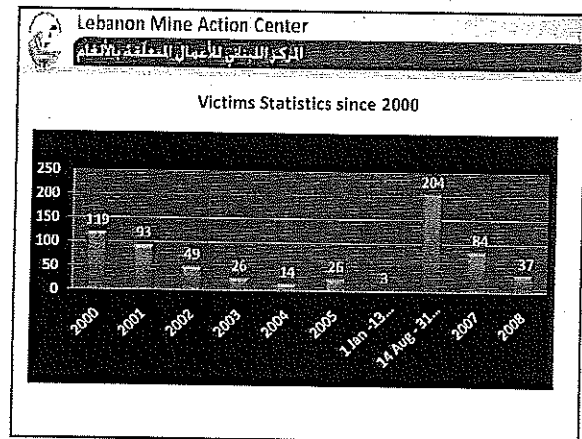
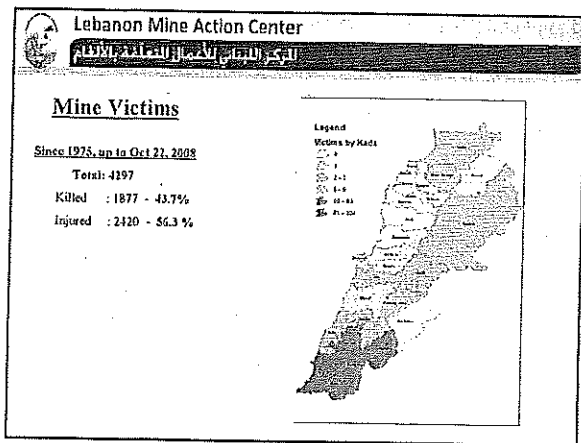
The National Technical Survey

- Aim:
 - > Confirm the initial info about the contaminated lands
 - > Land Release the non-contaminated areas
 - > Prepare Clearance plan for the confirmed contaminated areas.
- Supported by US Department of State Represented by DynCorp International
- Started in early 2005 and ceased operations as of August 2006 then resumed in Feb 2008

Results up-to-date are as follows:

- 58,508,292 sqm of land released to the Lebanese people
- 2,239,083 sqm has been marked for area reduction
- 7,609,310 sqm of land is scheduled for clearance

The map shows the geographical distribution of land release and clearance activities across Lebanon, with different colors and patterns representing various survey results.



Lebanon Mine Action Center

Cluster Bombs Casualties since August 14, 2006

Age	Injured	Killed	Total
Child (Male)	28	3	31
Child (Female)	4	0	4
Adolescent (Male)	51	4	55
Adolescent (Female)	3	0	3
Adult (Male)	179	35	214
Adult (Female)	17	0	17
Total	282	42	324

- Lebanon Mine Action Center
- ### Challenges facing Lebanon Mine Action Program
- Resource Mobilization and Fund Raising.
 - Competition with other Regional Mine Action Programs for resource funding
 - Unpredictable Aggressions, Hostilities and Terrorism Acts.
 - Lack of funding for MVA

Lebanon Mine Action Center

Difficulties in Humanitarian Demining Operations

- Characteristics of Lebanese territories (slopes, rocky soil, bushes)
- No information is available concerning CBU strike locations (Coordinates, Type and Quantity of CB, etc.)
- Israeli Minefields records contain wrong information.
- Lack of Humanitarian Demining/EOD/Under-Water EOD equipments.

Lebanon Mine Action Center

Needs

- Coordinates of CBUs Strikes of 2006 and Types/Quantities
- Remaining Minefields Maps
- Continuous Support to Lebanon MA Programme
- Training:
 - ✦ EOD and Under Water EOD - All levels
 - ✦ Quality Management
- Demining/EOD Equipments:
 - ✦ Protection equipment
 - ✦ Communication equipment
 - ✦ Detection equipment
 - ✦ Survey equipment
 - ✦ Medical equipment
 - ✦ Transportation equipment
 - ✦ EOD publications concerning all kinds of munitions (M60 series)
 - ✦ Engineering vehicles (underground UXO 's, destruction of former Israeli positions)


Lebanon Mine Action Center

Governmental Support


- Administrative Support to LMAC and Engineering Regiment
- Logistical Support
- Provision of Personnel
- High Level Coordination support
- Inter Ministerial support to Mine Action (MoD, MoF, MoH, MoE, MoSA)
- Government of Lebanon support is \$ 5.5 millions per year

Lebanon Mine Action Center


Major International Support




United Arab Emirates



European Union



United Nations



United States of America

Lebanon Mine Action Center

Acronyms

LAF	: Lebanese Armed Forces
LMAC	: Lebanon Mine Action Center
MA	: Mine Action
LIS	: Landmine Impact Survey (Level One Survey)
TS	: Technical Survey
ERW	: Explosive Remnants of War
UXO	: Un-Exploded Ordnance
CBU	: Cluster Bomb Unit
SD	: Self Destruction
DP	: Dual purpose (Anti Personnel and Anti Tank)
EOD	: Explosive Ordnance Disposal
BAC	: Battle Area Clearance
MDD	: Mine Detection Dogs
MCT	: Manual Clearance Team
MECH	: Mechanical Clearance Asset/Team
IMSMA	: Information Management System for Mine Action
MRE	: Mine Risk Education
MVA	: Mine Victim Assistance

المركز اللبناني للأعمال المتعلقة بالألغام
Lebanon Mine Action Center-LMAC

www.lebmac.org

شركة شكري خانم - القياصرة : Chikri Ghanem Gazern-Fayadih

Tel : +961 5 956 143

Fax : +961 5 956 192

Email : info@lebmac.org

Thank you for your attention.....