

**CONVENTION ON THE PROHIBITION OF THE USE, STOCKPILING, PRODUCTION AND TRANSFER OF
ANTI-PERSONNEL MINES AND ON THEIR DESTRUCTION**

Reporting Formats for Article 7

STATE [PARTY]:

The republic of South Sudan Transparency Report on Article 7

1st January 2016-31st December 2016

POINT OF CONTACT:

Hon.Jurkuck Barach Jurkuch

National Mine Action Authority-Republic of South Sudan

TelNo.+211954354849.

Email:bjurkuch@yahoo.com

Form A National implementation measures

No additional legal, administrative and other measures were taken during the previous calendar year to prevent and suppress any activity prohibited under the Convention.

Form B Stockpiled anti-personnel mines

Not applicable

Form C Location of mined areas as of 31st December 2016.

On 31st December 2016, the total of 248 areas are suspected to contain anti-personnel(AP) mines and 80,904,786 square metres all over South Sudan require clearance, as indicated in the table 1 below.

The insecurity in South Sudan has resulted into slow progress in the national clearance plan , most areas are not accessible because of the on going conflict in the many parts of South Sudan. There is need to focus on the clearance in order to meet Obligations of the Ottawa Treaty.

Table 1. Summary of areas known or suspected to contain anti-personnel mines as of 31 December 2016

State	County	Number of areas known to contain anti-personnel mines	Number of areas suspected to contain anti-personnel mines	Total number of areas known or suspected to contain anti-personnel mines	Amount of area known to contain anti-personnel mines (square metres)	Amount of area suspected to contain anti-personnel mines (square metres)	Total amount of area known or suspected to contain anti-personnel mines (square metres)
Central Equatoria	Juba		75	107		2,322,225	2,322,225
	Kajo Keji		3	3		4,400	4,400
	Lainya		7	11		66,125	66,125
	Morobo		12	13		100,806	100,806
	Terekeka		19	21		1,138,512	1,138,512
	Yei		17	21		133,851	133,851
	All counties		133	176		3,765,919	3,765,919
Eastern Equatoria	Budi		5	4		60,732	60,732
	Kapoeta East		2	5		17,174	17,174
	Kapoeta South		2	1		82,461	82,461
	Lafon		1	5		83,835	83,835
	Magwi		22	28		3,643,716	3,643,716
	Torit		17	18		545,845	545,845
	All counties		49	61		4,433,763	4,433,763
Jonglie	Akobo		3	3		5,366,256	5,366,256
	Ayod		1	1		0	0
	Bor South		3	4		164,000	164,000

	Duk		2	2		20,000	20,000
	Fangak		3	5		4,358,745	4,358,745
	Khorflus		9	10		1,868,650	1,868,650
	Nyirrol		3	3		5,929,366	5,929,366
	Pibor		1	2		0	0
	Pochalla		3	1		8,030,143	8,030,143
	Wuror		1	1		4,238,267	4,238,267
	All counties		29	33		29,975,427	29,975,427
Lakes	Cueibet		1	1		21,000	21,000
	Wulu		1	1		2,500	2,500
	All counties		2	3		23,500	23,500
Upper Nile	Fashoda		1	1		16,385	16,385
	Longochuk		1	1		4	4
	Maiwut		2	2		39,155,231	39,155,231
	Melut		1	1		252	252
	Panyikang		1	1		1,427	1,427
	All counties		6	8		39,173,300	39,173,300
Warrap	Tonj South		1			8,400	8,400
	All counties		1			8,400	8,400
Western Bahr El Ghazal	Jur River		2	1		2,500	2,500
	Wau		2	2		2,827,433	2,827,433
	All counties		4	3		2,829,933	2,829,933
Western Equatoria	Maridi		1	2		38,600	38,600
	Mundri East		10	10		505,945	505,945
	Mvolo		1	1		150,000	150,000
	All counties		12	13		694,545	694,545
All State			236	236		80,904,786	80,904,786

Form D APMs retained or transferred

The republic of South Sudan does not retain or transfer anti-personnel mines for permitted purposes.

Form E Status of programs for conversion or de-commissioning of APM production facilities

Not applicable

Form F Status of programs for destruction of APMs

In an event that APMs stockpiles are identified or discovered, they are destroyed using the relevant procedures in the South Sudan National Technical Standards and Guidelines (NTSGs), by the implementing partners on the ground. As of now, there are no stockpiles of AP mines in South Sudan all identified stockpiles have been destroyed and recorded in the information Management System for Mine Action (IMSMA) database, including details of the AP mines and the location.

2. Status of programs for destruction of APMs in mined areas (Article 5)

From 1st January to 31st December 2016, a total of 585 anti personnel mines were destroyed; 200 anti tank mines destroyed, 20,190 unexploded ordnance (UXO) destroyed and also 201,589 small arm munition (SAA) have been destroyed. 22,775,777 square metres released; 17,166,302 square metres cancelled; and 10,538,076 square metres cleared throughout South Sudan, as reported in Table 2, below

All land release endeavours are implemented in line with the NTSGs, which are based on the most current mine action standards.

Table 2. Progress in over the course of 1 January 2016 -31 December 2016

State	County	Cancelled area (square meters)	Reduced area (square metres)	Cleared area (square metres)	Total area released (square metres)	Number of anti-personnel mines destroyed	Number of areas released (Including UXO Spots)	Number of areas Unexploded ordnance excluding AT and AP	Number of AT Destroyed
Central Equatoria	Juba	615,207	54,635	2,008,806	2,678,648	456	467	2,065	77
	Kajo Keji	0	0	0	0	1		0	3
	Lainya	80,782	0	675,430	756,212	0	26	289	0
	Morobo	0	0	19,877	19,877	0	1	12	0
	Terekeka	180,600	0	250,307	430,907	8	32	474	4
	Yei	125,964	2,060	506,127	634,151	10	73	130	0
	All Counties	1,002,553	56,695	3,460,547	4,519,795	475	599	2,970	84
Eastern Equatoria	Budi	629,034	0	417,196	1,046,230	4	13	156	0
	Kapoeta East	0	0	46,404	46,404	0	5	55	8
	Kapoeta North	0	0	0	0	0	2	5	0
	Kapoeta South	0	0	384,673	384,673	2	38	199	1
	Lafon	846,213	0	0	846,213	0	15	17	2
	Magwi	0	0	1,994,847	1,994,847	34	74	973	73
	Torit	0	0	540,076	540,076	39	80	607	2
	All Counties	1,475,247	0	3,383,196	4,858,443	79	227	2,012	86
Jonglei	Bor South	35,000	0	495,126	530,126	0	39	254	0
	Duk	528,194	0	85,939	614,133	0	19	76	0

	Nyirrol	0	0	0	0	0	1	3	0
	Pibor	80	0	20	100	5	113	751	0
	Pochalla	0	0	5,332	5,332	23	9	9	0
	Twic East	0	0	0	0	0	19	18	0
	All Counties	563,274	0	586,417	1,149,691	28	200	1,111	0
Lakes	Awerial						3		
	Rumbek Centre	1,500	0	0	1,500	0	3	1	0
	Rumbek East	175,674	0	348,464	524,138	0	11	156	0
	Yirol West	0	0	691	691	0	1	0	0
	All Counties	177,174	0	349,155	526,329	0	18	157	0
North Bahr El Ghazal	Aweil North						3		
	Aweil South						1		
	Aweil West	491,129	0	0	491,129	0	7	32	0
	All Counties	491,129	0	0	491,129	0	11	32	0
Unity	Abiemnhom	13,370,545	0	112,244	13,482,789	0	7	14	0
	Guit	163	0	7,985	8,148	2	13	1,049	6
	Koch	0	0	522,969	522,969	0	38	98	7
	Leer	0	0	6,590	6,590	0	159	572	0
	Mayendit	1	0	41,315	41,316	0	35	32	0
	Mayom	0	0	93,552	93,552	0	139	157	1
	Pariang	2,000	0	222,091	224,091	0	64	1,077	3
	Rubkona	83,010	0	626,784	709,794	0	104	257	8
	All Counties	13,455,719	0	1,633,530	15,089,249	2	559	3,256	25

Upper Nile	Baliet	0	0	0	0	0	1	1	0
	Maban	206	14,704	0	14,910	0	26	48	0
	Malakal	0	0	194	194	0	83	348	3
	Manyo	0	0	0	0	0	1	1	0
	Melut	0	0	0	0	0	240	5,194	0
	Panyikang	0	0	0	0	0	1	1	0
	Renk	0	0	0	0	0	2	4,667	0
	All Counties	206	14,704	194	15,104	0	354	10,260	3
Warrap	Gogrial West	0	0	0	0	0	1	0	1
	Twic						1		
	All Counties	0	0	0	0	0	2	0	1
West Bahr El Ghazal	Jur River	0	0	367,733	367,733	1	139	254	1
	Wau	0	0	437,194	437,194	0	18	87	0
	All Counties	0	0	804,927	804,927	1	157	341	1
Wester Equatoria	Maridi	1,000	0	93,788	94,788	0	4	44	0
	Mundri East	0	0	175,372	175,372	0		0	0
	Mundri West	0	0	50,950	50,950	0	3	7	0
	All Counties	1,000	0	320,110	321,110	0	7	51	0
Total		17,166,302	71,399	10,538,076	27,775,777	585	2,134	20,190	200

Form G APMs destroyed after entry into force

Not applicable

Form H Technical characteristics of each type produced/owned or possessed

Already reorted

Form I Measures to provide warning to the population

All the suspected hazards are surveyed and marked by mine risk education (MRE) teams or clearance teams with international signs and are located in the map and recorded in IMSMA. While a landmine Impact Survey was completed in 2008, as well as other surveys covering smaller areas within south Sudan since then, the current extendt of contamination is unknown, particularly in the Greater Upper Nile region which comprises of the states such as(former Jonglei, Upper Nile and Unity state) which are most affected by the conflict that started in December 2013 upto date. Since the signing of August 2015, fighting still continues in some parts of the country including the greater Equatoria region which was by then not affected. This conflict has made access to some areas difficult to mine action teams to carry out survey and clearance in suspected hazardous areas. If security situations improves, there is need to carry out survey in the conflict affected areas to ascertain what actual exists in those areas.

However, through non-technical and technical survey, land has been either cancelled or prioritised for clearance. All the cleared minefields have been marked cleared in the map to promote activities such as livelihoods (land cultivation, markets) , infrastructural development, road constructionetc.

All over South Sudan, Mine Risk Education targets civilians at community level by age and gender, more specially, location of internally displaced persons(IDPs) and returnees, as well as schools are prioritised. The National Mine Action Authority(NMAA), in collaboration with United Nations Mine Action Service(UNMAS), still train and accredit all MRE staff according to the NTSGs. During deployment of the MRE teams, NMAA/UNMAS conduct joint field visits for quality assurance . The data of the number of beneficiaries receiving MRE is gathered and disaggregated for gender and age, as shown in the table 3, below.

MRE has been included in the national primary school curriculum. The Ministry of Education , science and Technology, in collaboration with UNICEF, developed and launched teacher;s guide books to be utilized in all public and private primary schools as well as teacher training colleges to inform chidren on the danger of landmines and ERW, as well as how to live safely with landmines/ERW contaminated areas.

The following are the National and international non governmental organization carrying out Mine Risk Education in South Sudan: CMI.CNA,DCA, Mine tech international,G4S, Malakal Media Theatre team, MEV+CHEM, MAG. SIMAS.TDI. and UNMAS.

ACHIEVEMENTS:

A total of 385,283 people in South Sudan received MRE in 2016. Its less than the previous year due to the current conflict access to other areas or communities has been limited because of the insecurity and the vast poplation has been either displaced within the country or seek refugee in the neighboring countries like keneya, Uganda, Ethiopia and Sudan.

The MRE is mostly directed to the IDPs leaving in the POC and areas which are relatively calm or peaceful.

Table 3: Civilian(disaggregated by gender and age)receiving MRE from 1 January-31 December2016

State	Boys	Girls	Men	Women	Total
West Bahr El Ghazal	6,681	5,028	4,112	4,803	20,624
Lakes	2,412	1,898	514	599	5,423
North Bahr El Ghazal	91	95	79	69	334
Warrap	50	34	64	52	200
Out side	0	0	0	0	0
Upper Nile	42,168	37,925	14,788	20,554	115,435
Unity	26,325	23,422	15,380	19,902	85,029
Jonglei	15,633	12,860	7,215	7,563	43,271
West Equatoria	815	738	346	508	2,407
East Equatoria	14,998	13,205	13,904	12,041	54,148
Central Equatoria	15,579	14,221	15,156	13,456	58,412

Form J Other relevant matters

From 1 January to 31 December 2016, there were 45 recorded new victims of anti personnel mines and ERW in six states. 32 people were injured and 13 were killed, as shown in the table 4, below.

The decrease of accident from 2015 was mostly like because of reduced human activities in most of the contaminated areas due to the conflict.

Majority of the population took refugee in the neighboring countries and some are displaced within the country and others are living in personnel protection camps all over UN Camps.

More so much effort has been exerted in providing Mine risk Education to the remaining population including school children.

The NMAA, Ministry of Gender, Ministry of health, civil society organizations, the ICRC, UNMAS, Handicap international and the victim Assistance Disability Organization work together to deliver medical, physical rehabilitation, psychological support and socio economic services to mine victims and other persons with disabilities.

The coordination forum is chaired by the Director General for victim Assistance Ministry of Gender and social welfare and co-chaired by the Director of Victim Assistance. NMAA.

There is no nation wide needs assessment being conducted for the victim in South Sudan.

CHALLENGES:

Our main challenge is lack of funding to support projects targeting, specifically landmine/ERW victims and people with disabilities, in general as it is not the priority of donors. The whole burden of Victim Assistance is left in the hands of the government and it does not have funding to support the victims of landmine/ERW. UNMAS in South Sudan has no mandate for victim Assistance.

More so the passing of the draft national disability policy to protect all persons with disability was delayed by the National parliament of South Sudan until 2016, it has hindered implementation of the Maputo Action plan.

In addition the clearance work is always directed towards the humanitarian areas of need and this may hinder AP mine clearance in other non-humanitarian areas.

The funding channelled to the South Sudan Mine Action Programme is directed through UNMAS and other NGOs. This makes projection on when the clearance completion date can be becomes a challenge for NMAA.

Table 4: Number of Accident and Victim from 1st January-31 December year 2016:

Year	Accident	Injured	Killed	Victims
Upper Nile	3	15	6	21
Warrap	1	0	1	1
East Equatoria	2	2	1	3
Unity	6	13	1	14
Jonglei	4	2	4	6
Total	16	32	13	45

NOTE

Annex 1. The table, below, shows the areas known and suspected to contain anti personnel mines in South Sudan.

Annex I: Areas known and suspected to contain anti-personnel mines as of 31 December 2016, and the estimated date of completion

Record Number	State	County	Longitude	Latitude	Area (square metres) know to contain anti-personnel mines	Area (square metres) suspected to contain anti-personnel mines	Estimated date of completion (year-end)
1	Central Equatoria	Juba	32.074063	4.639587			
2	Central Equatoria	Juba	31.31961	4.52753		48,400	
3	Central Equatoria	Juba	31.58978	4.70786		10,880	
4	Central Equatoria	Juba	31.49906	4.86703		120	
5	Central Equatoria	Juba	31.861484	4.489614		67,409	
6	Central Equatoria	Juba	31.99155	4.6871			
7	Central Equatoria	Juba	32.01259	4.32709		200,396	
8	Central Equatoria	Juba	31.92543	4.70045		1	
9	Central Equatoria	Juba	31.43816	4.22902		2,446	
10	Central Equatoria	Juba	31.43816	4.22902		25,379	
11	Central Equatoria	Juba	31.42145	4.07171		13,000	
12	Central Equatoria	Juba	31.9371	4.66034		51,528	
13	Central Equatoria	Juba	32.01259	4.32709		200,396	
14	Central Equatoria	Juba	31.61184	4.71102		440	
15	Central Equatoria	Juba	31.70249	4.12272		78,000	
16	Central Equatoria	Juba	32.040614	4.67224		2,928	
17	Central Equatoria	Juba	31.85859	4.68995		11,700	
18	Central Equatoria	Juba	31.99948	4.32961		11,000	
19	Central Equatoria	Juba	31.85394	4.69122		10,000	
20	Central Equatoria	Juba	31.96034	4.69371			

21	Central Equatoria	Juba	31.62297	4.29482		17,900	
22	Central Equatoria	Juba	31.92192	4.70411		10,305	
23	Central Equatoria	Juba	31.70478	4.69188			
24	Central Equatoria	Juba	31.61184	4.71102		18,387	
25	Central Equatoria	Juba	31.96296	4.693			
26	Central Equatoria	Juba	31.62463	4.29385		11,999	
27	Central Equatoria	Juba	31.86106	4.48158			
28	Central Equatoria	Juba	0	0			
29	Central Equatoria	Juba	0	0			
30	Central Equatoria	Juba	31.91749	4.70509		19,000	
31	Central Equatoria	Juba	31.15058	4.97872			
32	Central Equatoria	Juba	31.85698	4.44527		25,013	
33	Central Equatoria	Juba	31.76768	4.69534		3,873	
34	Central Equatoria	Juba	0	0			
35	Central Equatoria	Juba	31.64559	4.21792		32,554	
36	Central Equatoria	Juba	31.63427	4.19797			
37	Central Equatoria	Juba	31.652083	4.232556		1,257	
38	Central Equatoria	Juba	31.71148	4.08181			
39	Central Equatoria	Juba	31.63028	4.2893			
40	Central Equatoria	Juba	31.024017	5.292083		400	
41	Central Equatoria	Juba	30.119639	5.461389		107,917	
42	Central Equatoria	Juba	31.862056	4.479167		177,240	
43	Central Equatoria	Juba	31.7845	4.524528		521	
44	Central Equatoria	Juba	31.190528	4.888028		8,526	
45	Central Equatoria	Juba	31.700972	4.120861		2,500	
46	Central Equatoria	Juba	31.702278	4.122389		4,500	
47	Central Equatoria	Juba	32.008194	4.683917		15,000	
48	Central Equatoria	Juba	31.831222	4.539567			
49	Central Equatoria	Juba	31.982685	4.688949			

50	Central Equatoria	Juba	32.08868	4.654881		
51	Central Equatoria	Juba	31.84169	4.532774		120,000
52	Central Equatoria	Juba	31.840088	4.534447		80,000
53	Central Equatoria	Juba	31.866424	4.408087		80,000
54	Central Equatoria	Juba	31.085452	5.016991		2,244
55	Central Equatoria	Juba	30.942288	4.841495		19,500
56	Central Equatoria	Juba	31.825835	4.540639		100,000
57	Central Equatoria	Juba	31.962314	4.693539		6,000
58	Central Equatoria	Juba	32.076439	4.632778		
59	Central Equatoria	Juba	32.006889	4.296572		240,000
60	Central Equatoria	Juba	32.087989	4.653939		3,441
61	Central Equatoria	Juba	31.982685	4.688949		
62	Central Equatoria	Juba	32.07762	4.64264		
63	Central Equatoria	Juba	31.982685	4.688949		
64	Central Equatoria	Juba	32.08868	4.654881		
65	Central Equatoria	Juba	31.982685	4.688949		
66	Central Equatoria	Juba	32.08868	4.654881		
67	Central Equatoria	Juba	31.982685	4.688949		
68	Central Equatoria	Juba	31.956195	4.673511		72,720
69	Central Equatoria	Juba	31.65098	4.2307		60,000
70	Central Equatoria	Juba	31.62489	4.29358		55,100
71	Central Equatoria	Juba	31.598546	4.320878		9,750
72	Central Equatoria	Juba	31.645722	4.217853		45,000
73	Central Equatoria	Juba	31.63543	4.201282		100,000
74	Central Equatoria	Juba	31.862021	4.479275		104,000
75	Central Equatoria	Juba	31.394694	4.66725		33,555
76	Central Equatoria	Kajo Keji	31.51226	4.09255		
77	Central Equatoria	Kajo Keji	31.690889	3.853917		3,500
78	Central Equatoria	Kajo Keji	31.505316	4.006952		900

79	Central Equatoria	Lainya	30.82067	4.14289		4,908	
80	Central Equatoria	Lainya	30.96801	4.23283		14,148	
81	Central Equatoria	Lainya	30.971889	4.236333		11,719	
82	Central Equatoria	Lainya	30.811611	4.134361			
83	Central Equatoria	Lainya	30.953667	4.132833		10,350	
84	Central Equatoria	Lainya	30.942629	4.142493		25,000	
85	Central Equatoria	Lainya	30.960042	4.223892			
86	Central Equatoria	Morobo	30.86428	3.50354		8,464	
87	Central Equatoria	Morobo	30.804417	3.735583			
88	Central Equatoria	Morobo	0	0		3	
89	Central Equatoria	Morobo	30.78284	3.66976		7,840	
90	Central Equatoria	Morobo	30.863611	3.743528		758	
91	Central Equatoria	Morobo	30.72494	3.65942			
92	Central Equatoria	Morobo	30.8617	3.74504			
93	Central Equatoria	Morobo	30.881639	3.652583		83,741	
94	Central Equatoria	Morobo	30.775072	3.687197			
95	Central Equatoria	Morobo	30.793625	3.692778			
96	Central Equatoria	Morobo	30.791086	3.692508			
97	Central Equatoria	Morobo	30.791042	3.688883			
98	Central Equatoria	Terekeka	31.08253	5.57351		677,484	
99	Central Equatoria	Terekeka	31.063729	5.659576		16,216	
100	Central Equatoria	Terekeka	31.05015	5.34195		100	
101	Central Equatoria	Terekeka	31.04656	5.31767		8,781	
102	Central Equatoria	Terekeka	31.063639	5.659806			
103	Central Equatoria	Terekeka	31.119924	5.461861		243,000	
104	Central Equatoria	Terekeka	31.023458	5.29272		14,472	
105	Central Equatoria	Terekeka	31.054694	5.703528		5,655	
106	Central Equatoria	Terekeka	31.077844	5.691998		12,760	
107	Central Equatoria	Terekeka	31.023722	5.632389		1,885	

108	Central Equatoria	Terekeka	31.075972	5.65175		2,400	
109	Central Equatoria	Terekeka	31.019371	5.285738		35,000	
110	Central Equatoria	Terekeka	30.484715	5.810926		82,500	
111	Central Equatoria	Terekeka	31.150583	5.633389		12,723	
112	Central Equatoria	Terekeka	31.150583	5.633389		14,294	
113	Central Equatoria	Terekeka	31.150583	5.633389			
114	Central Equatoria	Terekeka	31.150583	5.633389			
115	Central Equatoria	Terekeka	31.150583	5.633389		3,142	
116	Central Equatoria	Terekeka	31.211889	5.633111		8,100	
117	Central Equatoria	Yei	30.73724	4.00889			
118	Central Equatoria	Yei	30.70699	4.10366		21,000	
119	Central Equatoria	Yei	30.7067	4.09234		2,000	
120	Central Equatoria	Yei	30.75294	3.95201		8,800	
121	Central Equatoria	Yei	30.78453	3.78502		4,475	
122	Central Equatoria	Yei	30.73123	4.0264		4,464	
123	Central Equatoria	Yei	30.6537	4.10815		7,862	
124	Central Equatoria	Yei	30.69751	4.07795		20,699	
125	Central Equatoria	Yei	30.74607	3.954492		2,683	
126	Central Equatoria	Yei	30.74855	4.02305		1,225	
127	Central Equatoria	Yei	30.69349	4.08098		2,401	
128	Central Equatoria	Yei	30.61252	4.0518		26,792	
129	Central Equatoria	Yei	31.99074	3.77709		2,474	
130	Central Equatoria	Yei	30.79992	3.82239		2,542	
131	Central Equatoria	Yei	30.74962	4.12633		4,539	
132	Central Equatoria	Yei	30.941667	4.142417		9,000	
133	Central Equatoria	Yei	30.60259	4.126565		12,895	
134	East Equatoria	Budi	33.49844	4.24093		20,800	
135	East Equatoria	Budi	33.452035	4.227762		6,333	
136	East Equatoria	Budi	33.3486	4.38268		33,599	

137	East Equatoria	Budi	33.497856	4.253344		
138	East Equatoria	Budi	33.497856	4.253344		
139	East Equatoria	Kapoeta East	33.669933	4.847124		14,347
140	East Equatoria	Kapoeta East	33.898417	4.624861		2,827
141	East Equatoria	Kapoeta South	33.66167	4.75304		27,461
142	East Equatoria	Kapoeta South	33.6614	4.75334		55,000
143	East Equatoria	Lafon	32.93016	4.53479		83,835
144	East Equatoria	Magwi	32.50835	3.815671		118,988
145	East Equatoria	Magwi	32.51308	3.76831		217,904
146	East Equatoria	Magwi	32.00605	4.17571		
147	East Equatoria	Magwi	31.99128	4.12742		
148	East Equatoria	Magwi	32.50731	3.81254		144,302
149	East Equatoria	Magwi	31.91563	3.93382		44,846
150	East Equatoria	Magwi	31.99173	4.12959		
151	East Equatoria	Magwi	32.03715	3.59897		69,350
152	East Equatoria	Magwi	32.1902	4.28147		400
153	East Equatoria	Magwi	32.53778	3.95302		
154	East Equatoria	Magwi	0	0		
155	East Equatoria	Magwi	31.95412	4.074		2,596
156	East Equatoria	Magwi	31.99611	4.21156		10,074
157	East Equatoria	Magwi	31.9768	4.10307		5,093
158	East Equatoria	Magwi	32.519667	3.768389		
159	East Equatoria	Magwi	32.004972	4.162472		
160	East Equatoria	Magwi	32.009083	4.276722		13
161	East Equatoria	Magwi	31.981395	4.023008		2,860,000
162	East Equatoria	Magwi	31.995937	4.213221		70,400
163	East Equatoria	Magwi	31.997916	4.209679		46,800
164	East Equatoria	Magwi	32.000644	4.20052		7,350
165	East Equatoria	Magwi	32.003001	4.181555		45,600

166	East Equatoria	Torit	32.74475	4.487		127,240	
167	East Equatoria	Torit	32.55692	4.41767			
168	East Equatoria	Torit	32.64913	4.43402		21,460	
169	East Equatoria	Torit	32.744728	4.486995		10,000	
170	East Equatoria	Torit	32.64519	4.43272		6,187	
171	East Equatoria	Torit	32.49168	4.52327		67,787	
172	East Equatoria	Torit	32.49123	4.38643		7,448	
173	East Equatoria	Torit	32.3775	4.22465		21,653	
174	East Equatoria	Torit	32.48049	4.6532		2,500	
175	East Equatoria	Torit	32.6516	4.64782			
176	East Equatoria	Torit	32.29993	4.49854			
177	East Equatoria	Torit	32.74146	4.48599		233,600	
178	East Equatoria	Torit	32.50532	4.41609			
179	East Equatoria	Torit	32.377092	4.22503		47,970	
180	East Equatoria	Torit	0	0			
181	East Equatoria	Torit	32.50375	4.415917			
182	East Equatoria	Torit	32.481965	4.403662		0	
183	Jonglei	Akobo	33.004639	7.785028		25	
184	Jonglei	Akobo	32.999992	7.932986		1,978,079	
185	Jonglei	Akobo	32.280056	8.178219		3,388,152	
186	Jonglei	Ayod	31.433333	8.116667			
187	Jonglei	Bor South	31.5725	6.257139		39,000	
188	Jonglei	Bor South	31.586414	6.387674		125,000	
189	Jonglei	Bor South	31.731944	5.892222			
190	Jonglei	Duk	31.415064	7.459764		20,000	
191	Jonglei	Duk	31.416667	7.461111			
192	Jonglei	Fangak	31.1561	9.40905		20,000	
193	Jonglei	Fangak	31.158583	9.408694		812,181	
194	Jonglei	Fangak	30.884464	9.069444		3,526,564	

195	Jonglei	Khorflus	31.552778	9.361111		250,000	
196	Jonglei	Khorflus	31.409444	9.290278			
197	Jonglei	Khorflus	31.773785	8.96962		135,000	
198	Jonglei	Khorflus	31.498311	9.143		139,650	
199	Jonglei	Khorflus	31.738918	9.0959		274,000	
200	Jonglei	Khorflus	31.766034	8.99329		220,000	
201	Jonglei	Khorflus	31.212096	9.171833		850,000	
202	Jonglei	Khorflus	31.155556	9.410556			
203	Jonglei	Khorflus	31.151389	9.410556			
204	Jonglei	Nyirrol	32.155135	8.17889		63,000	
205	Jonglei	Nyirrol	32.14975	8.179611			
206	Jonglei	Nyirrol	32.120786	8.179653		5,866,366	
207	Jonglei	Pibor	34.463881	6.168067			
208	Jonglei	Pochalla	34.10189	7.17305		1,279	
209	Jonglei	Pochalla	34.09418	7.18106		86,604	
210	Jonglei	Pochalla	34.084522	7.167261		7,942,260	
211	Jonglei	Wuror	31.877189	7.903636		4,238,267	
212	Lakes	Cueibet	29.18198	7.03163		21,000	
213	Lakes	Wulu	29.525722	6.058222		2,500	
214	Upper Nile	Fashoda	31.88864	9.86742		16,385	
215	Upper Nile	Longochuk	33.973028	9.209897		4	
216	Upper Nile	Maiwut	33.571331	8.500686		4,683,615	
217	Upper Nile	Maiwut	33.783353	8.383342		34,471,616	
218	Upper Nile	Melut	32.26661	10.31228		252	
219	Upper Nile	Panyikang	31.54353	9.36647		1,427	
220	Warrap	Tonj South	28.67169	7.27172		8,400	
221	West Bahr El Ghazal	Jur River	28.21444	7.5799		2,500	
222	West Bahr El Ghazal	Jur River	28.00983	7.50428			
223	West Bahr El Ghazal	Wau	27.94263	6.8033		2,827,433	

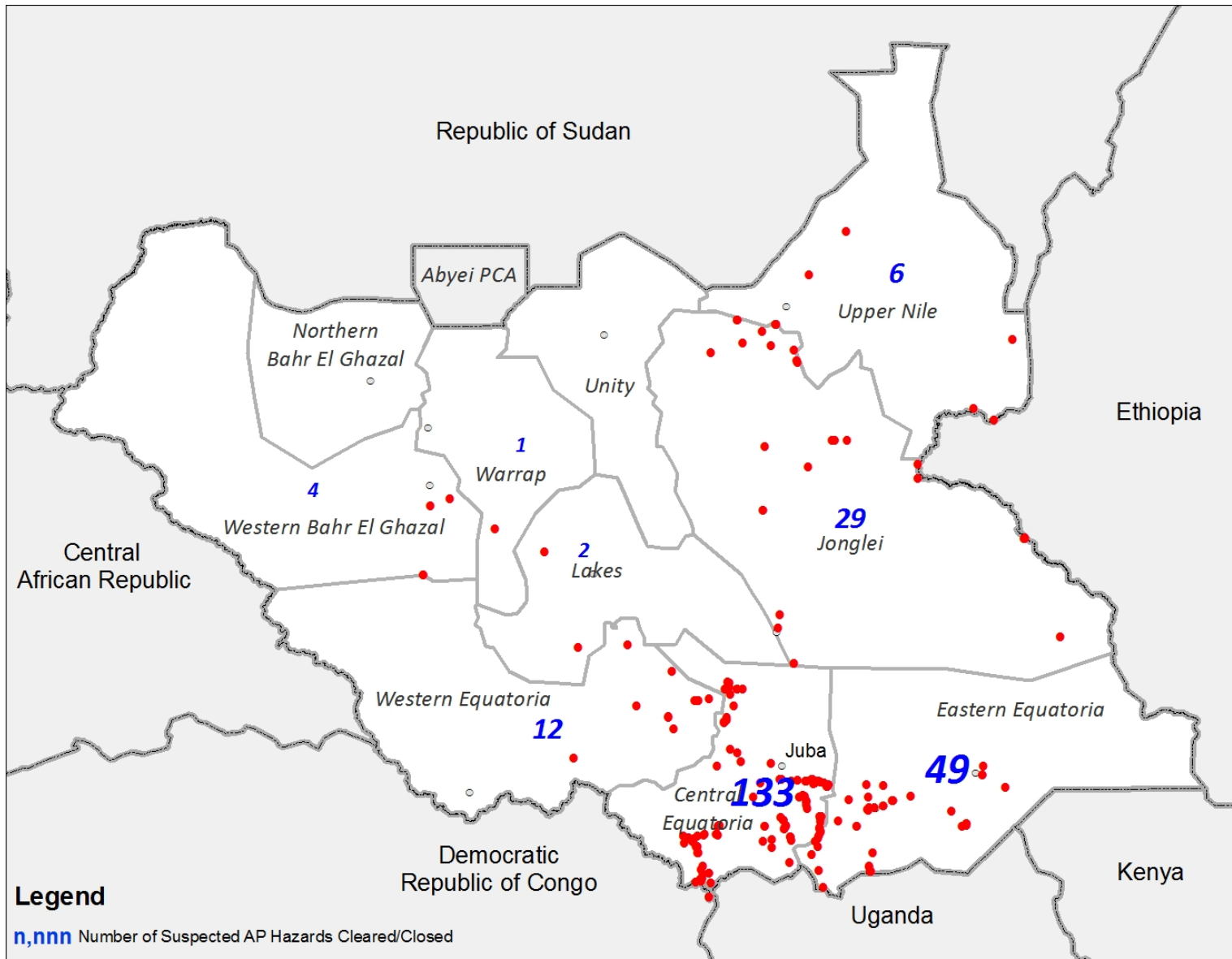
224	West Bahr El Ghazal	Wau	27.942781	6.803318			
225	West Equatoria	Maridi	29.478381	4.923359		38,600	
226	West Equatoria	Mundri East	30.75377	5.51666		100,400	
227	West Equatoria	Mundri East	30.44849	5.34607		8,986	
228	West Equatoria	Mundri East	30.86269	5.53425		108,707	
229	West Equatoria	Mundri East	30.72247	5.51356		2,000	
230	West Equatoria	Mundri East	30.44625	5.33996		2	
231	West Equatoria	Mundri East	30.72247	5.51356		5,006	
232	West Equatoria	Mundri East	30.725417	5.512944		61,197	
233	West Equatoria	Mundri East	30.725417	5.512944		61,197	
234	West Equatoria	Mundri East	30.725278	5.513056		95,450	
235	West Equatoria	Mundri East	30.507002	5.222795		63,000	
236	West Equatoria	Mvolo	30.035465	6.085929		150,000	
Total						80,904,786	

Annex II. The maps, below, show the hazards cleared and /or closed, both for the reporting period and culmination to end of reporting.



Known Suspected AP Hazards

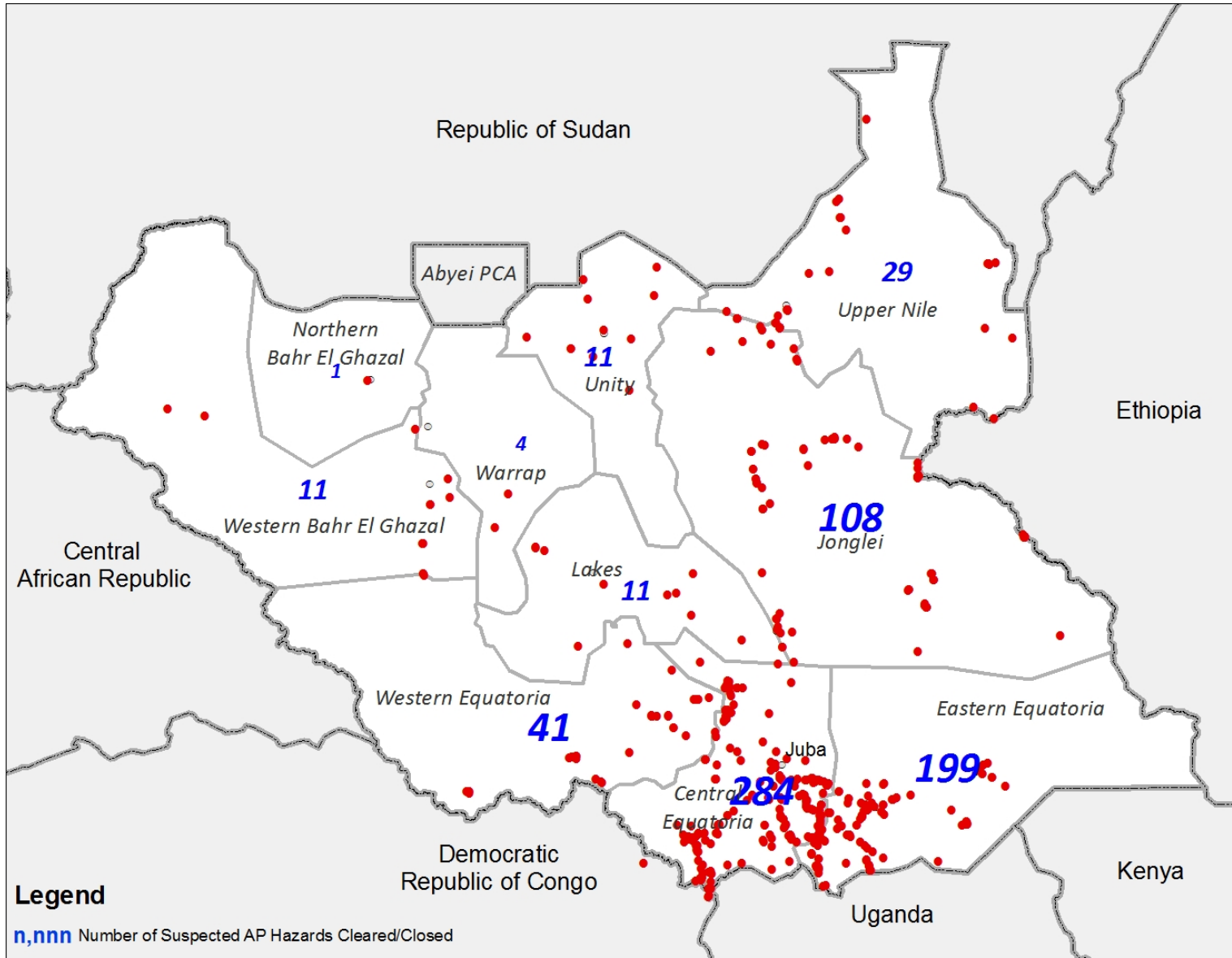
As Of December 2016





Known Hazard

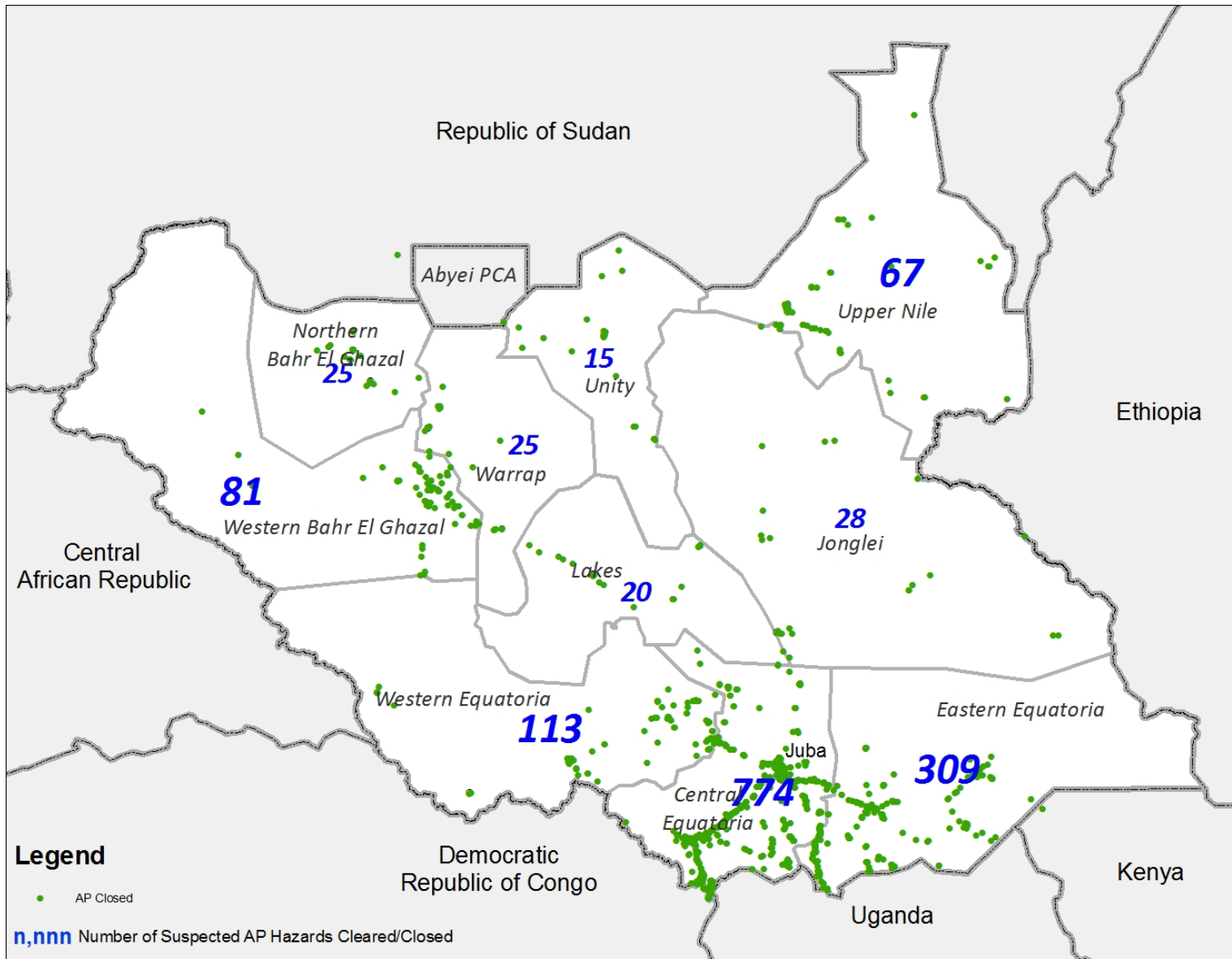
As Of December 2016





Suspected AP Hazards Closed

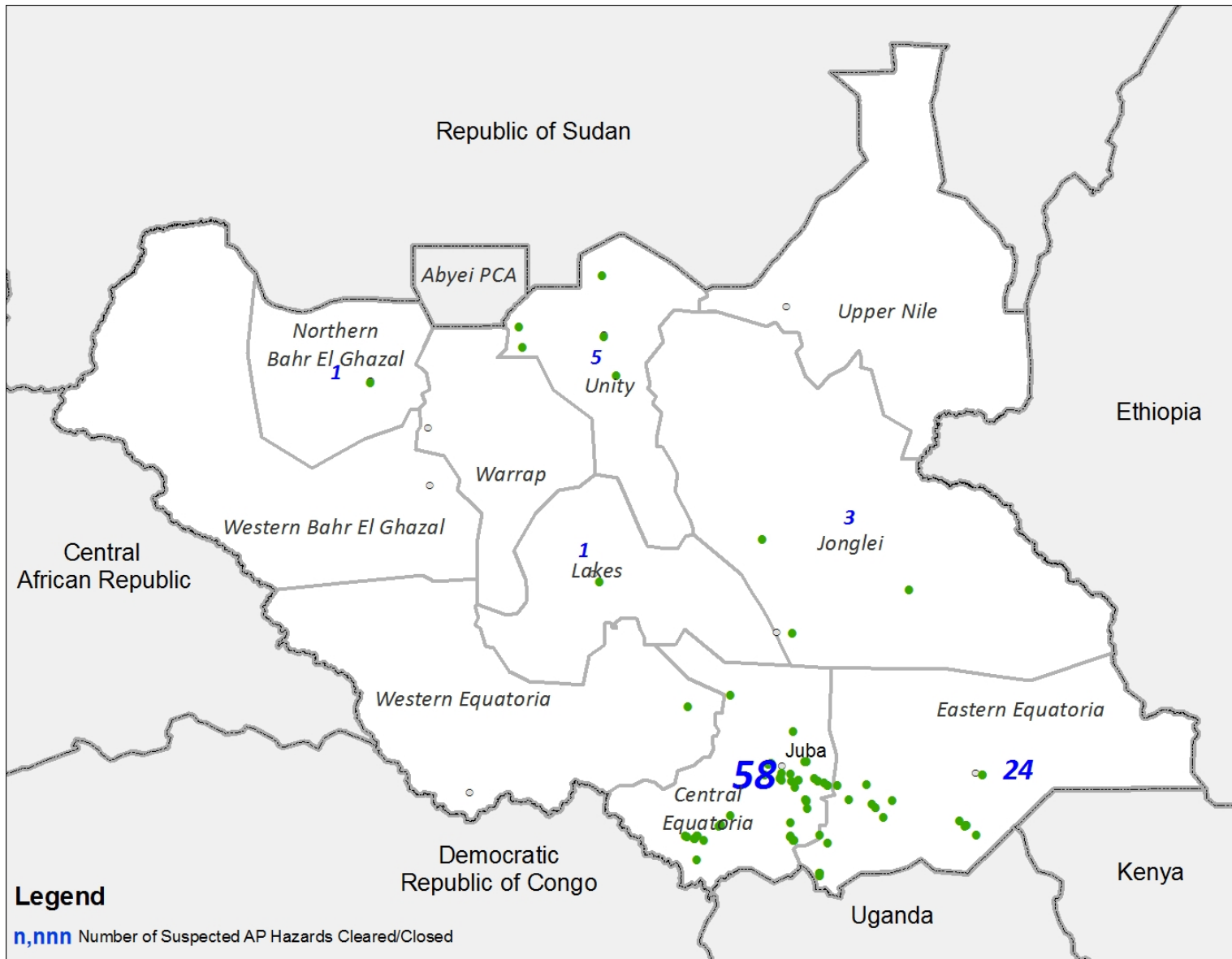
As Of December 2016





AP Hazards Closed

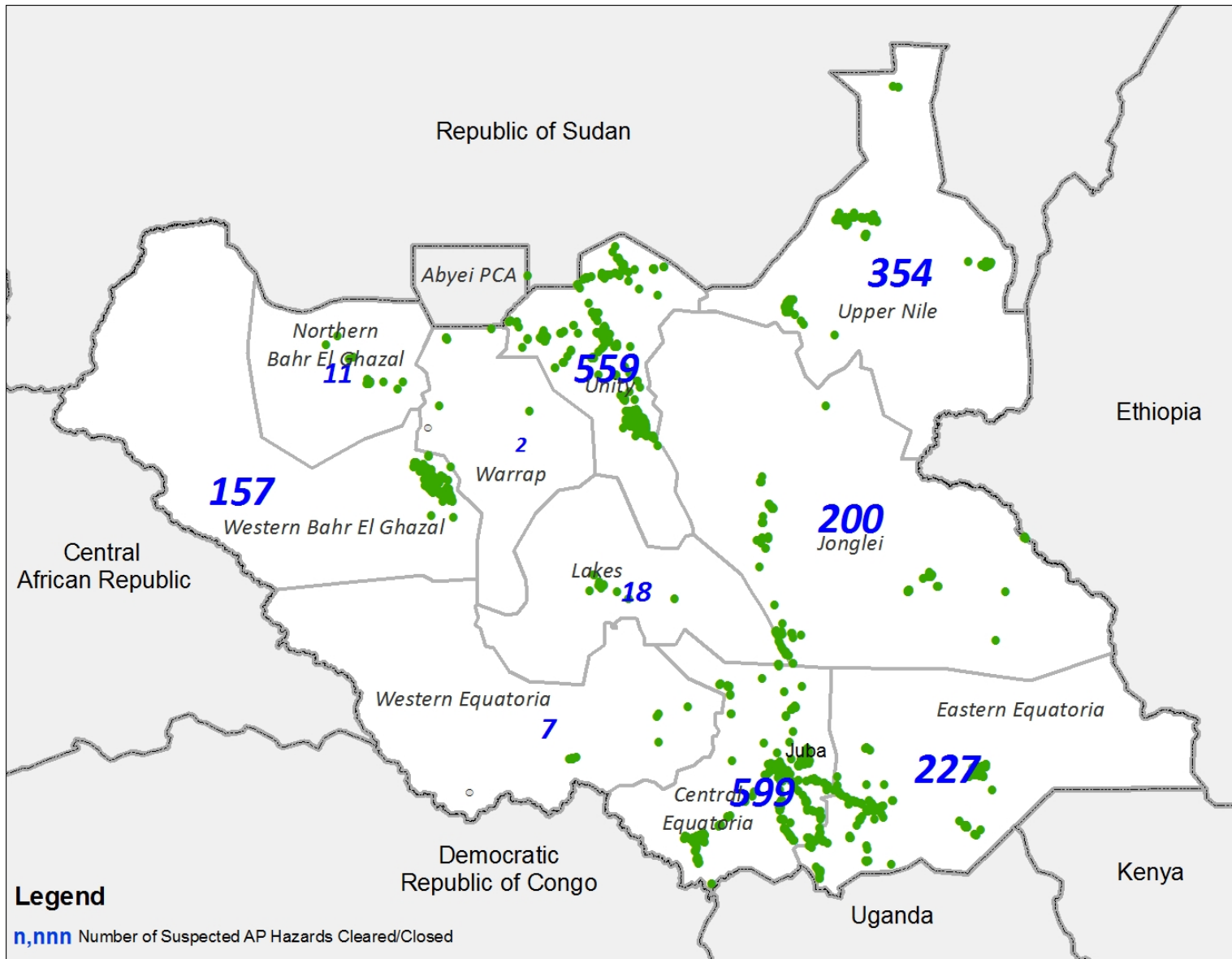
During 2016





Closed Hazards

During 2016





Closed Hazards

As Of December 2016

