



The Way Forward for Mine Action & what the GICHD can contribute

**Presentation for the Regional Conference on Mine
Action and Implications for Peace and
Development**

By Ambassador Stephan Nellen

Director of the GICHD

14 March 2007

Phnom Penh



Content

- 1. The GICHD – who we are and what we do**
- 2. Current situation & challenges**
- 3. What the GICHD can contribute:**
 - a) Linking Mine Action to Development**
 - b) Risk Management**



1. Who we are and what we do

Mission Statement

The GICHD works for the elimination of anti-personnel mines and for the reduction of the humanitarian impact of other landmines and explosive remnants of war.

To this end, the GICHD will, in partnership with others, provide operational assistance, create and disseminate knowledge, improve quality management and standards, and support instruments of international law, all aimed at increasing the performance and professionalism of mine action.

(excerpt from the GICHD Strategy 2006-2008)



□ **The GICHD is**

- **an intergovernmental organisation based on Swiss foundation law, financed by states**

□ **The GICHD**

- **works in the area of “Mine Action” according to UN definitions, including ERW clearance (except medical side of the problem)**
- **Links issues of landmines and other explosive remnants of war to emergency, reconstruction, peace building and development**



... in short:

« The objective of the GICHD is to contribute in making the mine action industry safer, faster, cheaper and more effective »



Main products of the GICHD:

- Continued development of Information Management System IMSMA, and installation of new version 4 (upgrading and new installations)**
- International Mine Action Standards (IMAS) – Support in developing national standards (NMAS)**
- Support to the Ottawa Convention (ISU) – Article 5 implementation and extension requests**



Current operational focus:

- **Develop improved methodologies and publish handbooks with best practices for**
 - **Manual demining**
 - **Mechanical demining**
 - **Testing and Use of dogs and rats**
- **Undertake studies in all fields of mine action (except for the medical side of mine action)**
- **Undertake evaluations to generate lessons learned for future guidance;**
- **Increased focus on ERW**
- **Develop and implement risk management methodologies**



Researching & establishing Mine Action as a crosscutting issue:

- ❑ **Human Security – synergies with Small Arms and Light Weapons**
- ❑ **Peacekeeping – increasing cooperation with peacekeeping training centres and multilateral security organizations**
- ❑ **Peace-building – Mine Action as a Confidence building measures**
- ❑ **Development – Linking Mine Action with Development Project (LMAD)**



2. Current situation and challenges

- The Ottawa Convention celebrates its 10 year anniversary in 2007**
- Much has been accomplished, more remains to be done**
- The Deadline for article 5 implementation is approaching fast**
- International support and funding for Mine Action will decline**



Tools to enable States to demine faster and reach their article 5 obligations on time:

- **Mine Action has to become more efficient:**

→ Risk Management

- **Mine Action has to integrate into broader agendas:**

**→ Linking Mine Action to Development
(LMAD)**

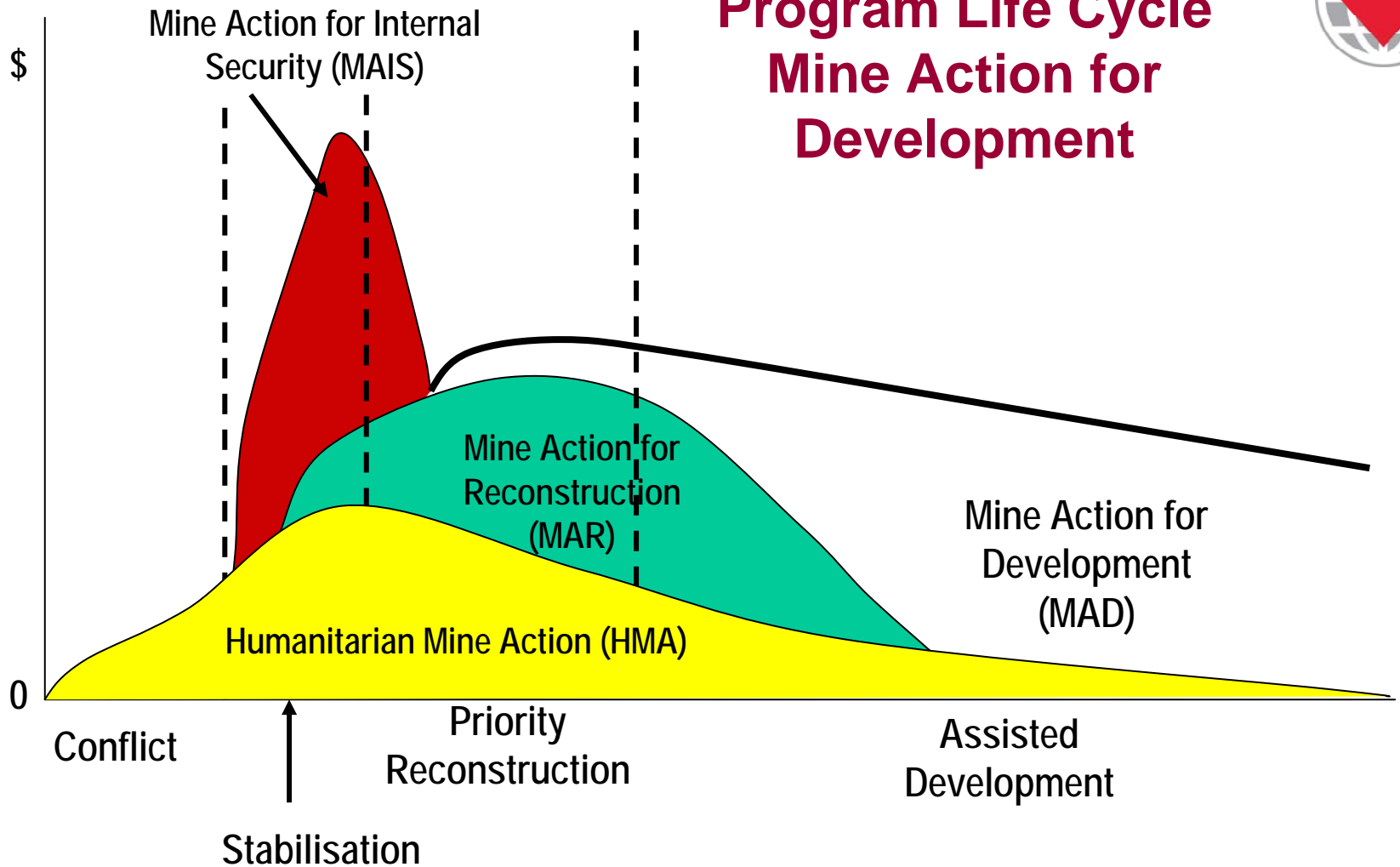


3.a) Linking Mine Action & Development (LMAD)





Program Life Cycle Mine Action for Development





LMAD: Why is this an issue?

- Landmine contamination negatively impacts on post-conflict reconstruction and development**
- Mine action has operated in stand-alone manner**
- No systematic coordination or consultation between mine action and development sectors**



LMAD: What are the benefits?

- **Better alignment of mine action with development priorities**
- **Greater coordination between mine action and development organisations**
- **Interventions which are more responsive to needs**
- **Greater sustainability for mine action funding**



GICHD's LMAD Project 2007-2008

Key strands of work:

- Research**
- OECD's Development Assistance Committee (DAC)**
- Outreach to development sector**
- Strengthening capacity of mine-affected states**
- LMAD Contact Group**



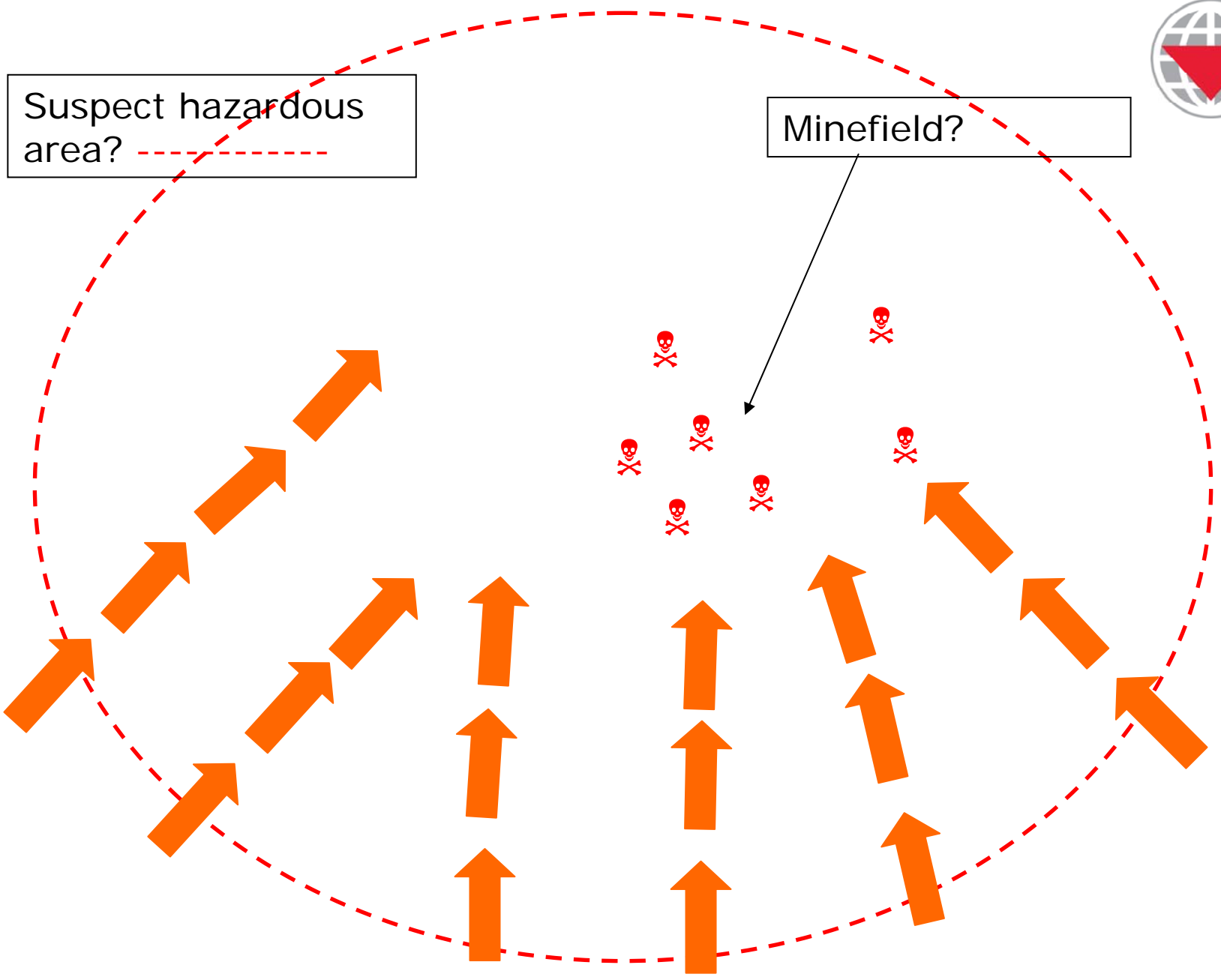
3.b) Risk Management – The Problem

- General assessments and impact surveys have led to large areas of "suspect" land, but in reality much less is in fact mined**
- Anti-vehicle mines and ERW are also likely to be present**
- Good procedures are in place for full clearance, but not land release**



Suspect hazardous area? -----

Minefield?



Shall we... or not...



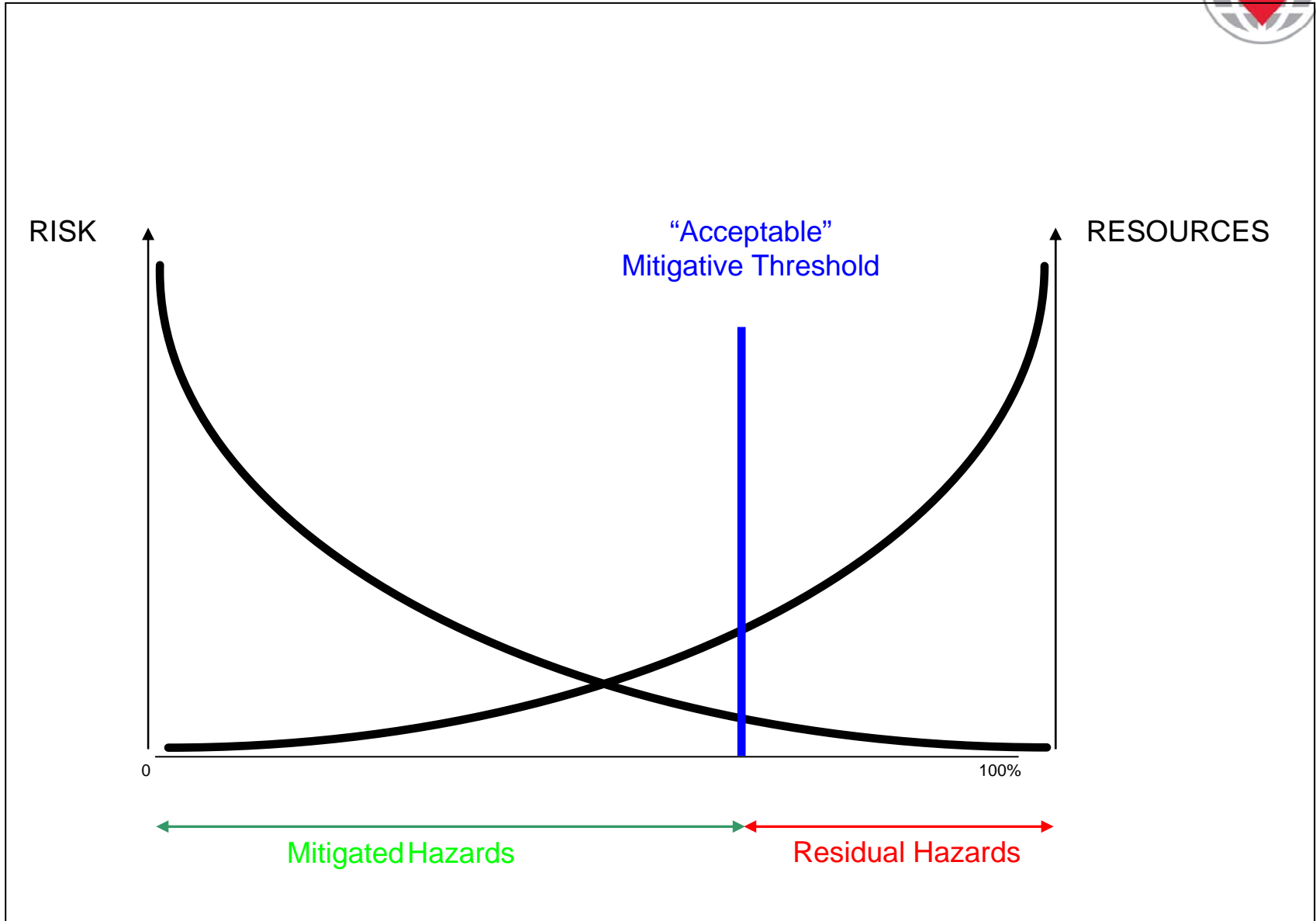


Risk Management – Definition

A systematic process to

- identify/quantify risk (survey), and
- mitigate risk (clearance/technical survey), to
- tolerable levels (end user acceptance)

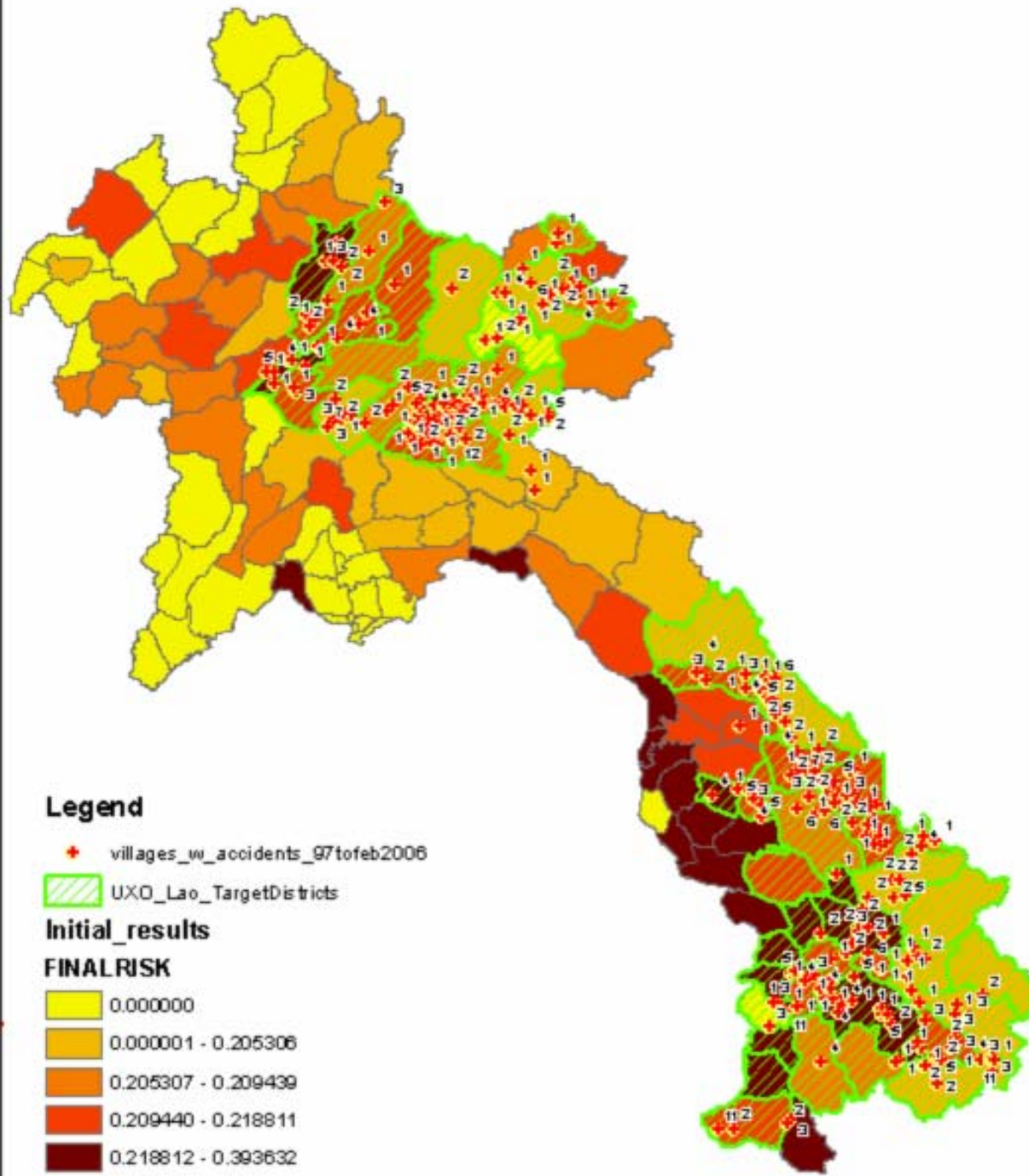
Risk vs. resources





Risk Management – The work of the GICHD

- ❑ **Development of Risk Management methodology in cooperation with national partners (Sudan, Lao PDR, Cambodia), NGOs (NPA) and the UN (UNMAS)**
- ❑ **Testing of achieved results (Lao PDR)**
- ❑ **Implement and disseminate the method with our partners**





Risk Management – answers to 5 common objections

1. Does not contradict the AP mine ban treaty, but is rather an instrument to meet treaty obligations and can speed up its implementation
2. The treaty and IMAS may confuse and prevent the development of a concept if not clarified. (mine free, impact free, 100% clearance, all known mines etc)
3. Does not imply reduced tolerability towards mine clearance (reduced quality)
4. Liability in case of accidents – part operator, part host country
5. Will likely reduce risk to wider population groups compared with traditional approaches

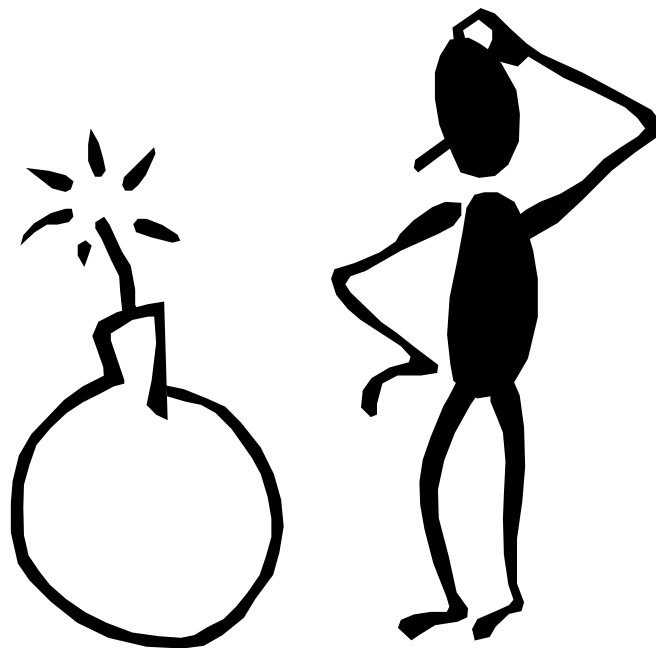


Conclusions

- ❑ **LMAD and Risk Management can be tools to fulfill obligations under the Ottawa Convention**
- ❑ **Break the isolation in which Mine Action operates**
- ❑ **Take a broader, more inclusive approach towards Mine Action**



Questions?



**More information on
www.gichd.org**