



Good practices in the establishment of national mine clearance and explosive ordnance disposal response

**Ambassador Stephan Nellen, Director
Geneva International Centre for
Humanitarian Demining**

Vanuatu, 3 May 2007



Content

1. **Best Practices**
 - Institutional
 - Operational

2. **Examples from other countries**
 - Cambodia – Linking Mine Action to Development
 - Laos – Risk Management

3. **How the GICHD can support you**



1. Commitment to Mine Action = Landmines & ERW





2. Interministerial coordination





3. National legislation



The MAC is to coordinate all operational mine action activities in the country. The MAC shall draft, and update as required, a national mine action strategy and annual workplan, including the criteria for setting mine action priorities.

Developing Mine Action Legislation

for adoption by the National Mine Action Authority. In addition, the MAC will report regularly to the National Mine Action Authority on progress towards the full



4. Performing work to an agreed standard

*International
mine action standards*





5. Information Management

IMSMA Navigation

File Map Options

- Switzerland
 - Feldau
 - Bollikon
 - Waltem
 - Pausen
 - Vaud
 - Lausanne
 - Lausanne
 - Ville de Lausanne

1:1,000

Longitude: 6.52763 Latitude: 46.54223

Location ID	Location Name	Location Description	Entry Date	Last Updated Date
-------------	---------------	----------------------	------------	-------------------

Map Mode Is Zoom To Area



6. Training





7. Socio-economic approaches



**A Guide
to Socio-Economic
Approaches to Mine Action
Planning and Management**

Jointly developed by
International Centre for
Democracy and
Human Rights Foundation



8. Mine Risk Education (MRE)



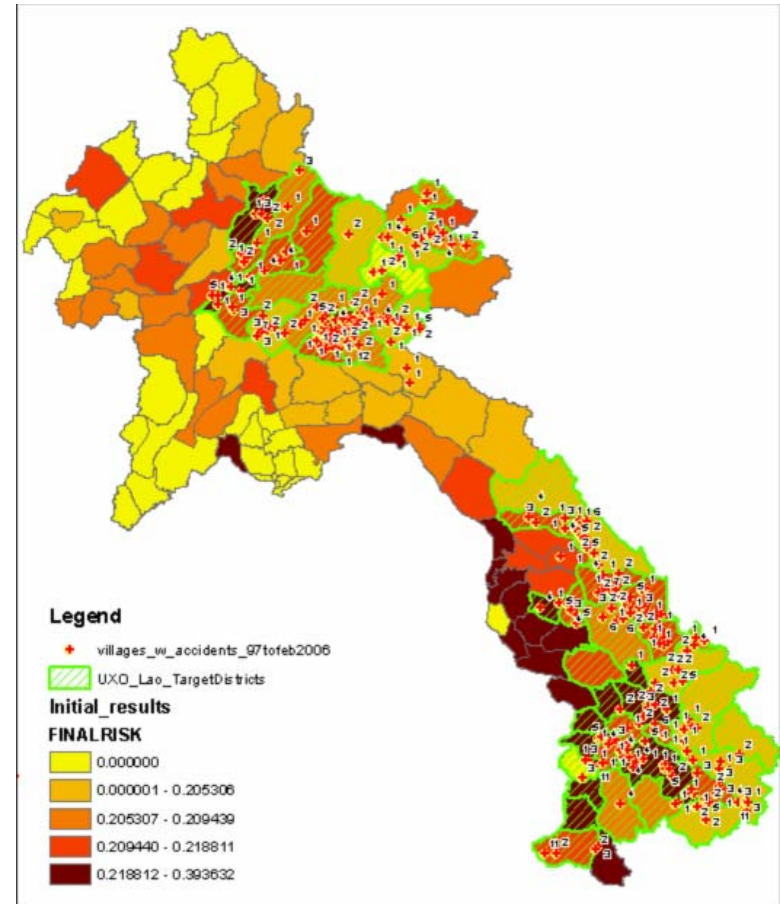


9. Environment-friendly demining





Laos: Risk Management





Cambodia: Linking Mine Action And Development





The GICHD – the institution





The GICHD – our role

Mission Statement

The GICHD works for the elimination of anti-personnel mines and for the reduction of the humanitarian impact of other landmines and explosive remnants of war.

To this end, the GICHD will, in partnership with others, provide operational assistance, create and disseminate knowledge, improve quality management and standards, and support instruments of international law, all aimed at increasing the performance and professionalism of mine action.

(excerpt from GICHD Strategy 2006-2008)



Operational assistance





How to reach us?

Our address:

GICHD

7bis, avenue de la Paix

P.O. Box 1300

CH-1211 Geneva

Our e-mail: info@gichd.org

Our website: www.gichd.org



Thank you for your attention!

Questions?

