



National Capacity and Ownership in Rehabilitation Cambodia Victim Assistance Expert Meeting

**23-24 November 2022
Room XXI at UNOG, Geneva Switzerland**

By: HE. (Mr.) Mao Bunnhath, Advisor and Director of Victim Assistance Department of CMAA

Tel: (855) 12 94 93 92, 98 60 9999

E-mail: mao_bunnhath@cmaa.gov.kh

Website: www.cmaa.gov.kh

1. HISTORY

A. Mine/ERW and Rehabilitation History in Cambodia

Cambodia is heavily contaminated with mine and ERW due to decades of conflicts.

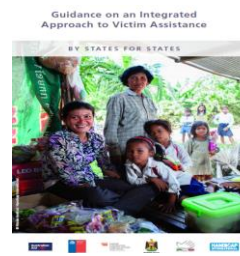
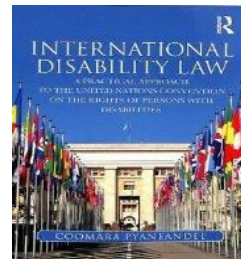
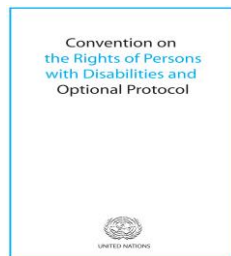
- **1940's:** World War II and struggle for independence
 - **Late 1960's-1975:** US involvement and bombing in Cambodia, Laos and Vietnam
 - **1975 – 1979:** Regime of Democratic Kampuchea
 - **1979 – 1998:** Cambodian internal conflicts
 - **1993:** Historical General Elections sponsored by the UN
 - **1994 – 1998:** Renewed Khmer Rouge offensives
- 1998:** The Win-Win policy ended the Khmer Rouge political and military Organization and led to peace, stability and public order.
- * Exceed, Since 1992, supporting 2 PRC and 1 PO School
 - * HI Supporting 4 PRC, since 1990, 3 handed to MoSVY
 - * ICRC Since 1990 Two PRCs, 1 component Factory now with MoSVY



2. LAWS AND POLICIES

International

1. Anti-Personnel Mine Ban Convention
2. UN Convention on the Rights of Persons with Disabilities.
3. Action Plan on Mine Action (Catagena->MAPUTO->OSLO->...)
4. Guidance on Victim Assistance Reporting (APMBC, CCW and CCM).
5. International Mine Action Standard on Victim Assistance.



National

1. National Mine Action Strategy 2018-2025
2. 3 Year Implementation Plan 2021-2023 for NMAS
3. Law on the Protection and Promotion of Rights of PWDs (2009)
4. National Disability Strategic Plan 2019-2023
5. National Strategic Development Plan 2019-2023
6. Rectangular Strategy Phase IV (integrated disability in the RGC agenda)
7. CMDGs (Goal 9th) and now CSDGs (Goal 18th)
8. National Social Protection Strategy for the Poor and Vulnerable 2011-2015.
9. Cambodian Mine Action Standard on Victim Assistance (2nd drafted)
10. Instruction on Landmine Victim Assistance in Cambodia by Cambodia Red Cross

3. PHYSICAL REHABILITATION CENTERS

- 11 PRCs, 3 Repair Workshop and 1 Spinal Injure Cord Center



No	Name	Location	Funded support by
1	Physical Rehabilitation Center (Kieng Kleang)	Phnom Penh	Veteran International Cambodia (VIC)
2	Physical Rehabilitation Center	Prey Veng	Veteran International Cambodia (VIC)
3	Physical Rehabilitation Center	Kratie	Veteran International Cambodia (VIC)
4	Physical Rehabilitation Center (Exceed)	Phnom Penh	Exceed Worldwide (ED)
5	Physical Rehabilitation Center	KPC	Exceed Worldwide (ED)
6	Physical Rehabilitation Center	Kompong Som	Exceed Worldwide (ED)
7	Physical Rehabilitation Center	Kompong Speu	International committee of the Red Cross
8	Physical Rehabilitation Center	Battambang	International committee of the Red Cross
9	Physical Rehabilitation Center	Kompong Cham	Humanity & Inclusive (HI)
10	Physical Rehabilitation Center	Siem Reap	Persons with Disabilities Foundation
11	Physical Rehabilitation Center	Takeo	Persons with Disabilities Foundation
12	Repair workshop	Preah Vihear	Persons with Disabilities Foundation
13	Repair Workshop	Kompong Thom	Persons with Disabilities Foundation
14	Repair Workshop	Svay Rieng	Persons with Disabilities Foundation
15	Spinal Cord Injury Center	Battambang	Persons with Disabilities Foundation

PHYSICAL REHABILITATION CENTERS

International Community Donors Support to PRCs



- PwDF, Since 1992, supporting 5 PRCs, 3 Repair Workshops and 1 Spinal Injury Cord Center



- ICRC Since 1990 Two PRCs, 1 component Factory now with MoSVY.



- Exceed, Since 1992, supporting 3 PRC and 1 PO School



- HI Supporting 4 PRC, since 1990, 3 handed to MoSVY.

4. REHABILITATION SERVICES

1. Production

- Prosthetics
- Orthotic

2. Assistive Device

- Walking Aids
- Wheelchair
- Tricycle
- Crutch

3. Psycho-social Therapy

- Occupational Therapy
- Speech Therapy

4. Community Services

- Mobile Service

5. Repairment/ Outreach Services

6. Community Based Rehabilitation



- All PRCs service
- Free Charge for products and Treatment
- Food, Transportation and Accommodation



5. ACHIEVEMENT FOR PROVIDE SERVICE TO PWD



16,412
people were
attended PRCs
in 2020.



14% (2,340) newly attended



26% (4,298) female, and



28% (4,589) children <18 years



Of the total
16,412
people were
attended PRCs
in 2020



47% Amputation



8% Post-polio infection



13% Cerebral palsy



7% Club foot



25% Others

See Table #1 for more details of main services provided by different agencies:

Table 1 # PRCs		Clients and registrations				Production			Provision of assistive devices and repairs			Physiotherapy	
Agency	# PRCs	Total Registration	New clients	Female	<18 Years	Total	Prosthetics	Orthotics	Wheelchairs & Tricycles distributed	Walking Aids distributed	Repairs	Assessments	Treatment
PWDF	5	4,784	662	1,184	1,698	1,023	531	492	91	482	2,264	1,612	7,881
ICRC	2	6,843	904	1,563	1,139	1,813	1,029	784	494	1,033	3,678	4,515	22,625
Exceed	3	3,002	289	905	1,078	828	309	519	119	192	1,755	669	2,236
HI	1	1,783	485	646	674	426	192	234	182	300	536	1,314	6,490
TOTAL	11	16,412	2,340	4,298	4,589	4,090	2,061	2,029	886	2,007	8,233	8,110	39,232

6. CURRENT CHALLENGE

- All NGOs aiming to leave by 2025
- PRCs handed over to PWDF losing trained staff and under funded.
- The services are isolated from health care.
- Concerns about sustainability.
- Brain drain
- Sustainable funding
- Fund Support to Rehabilitation has fallen down
- Some traditional donors shift their support to other countries



7. PLANS FOR SUSTAINABILITY



- PRCs will transfer to MoH, (good planning for sustainability)
- Cambodia has
 - ❖ Internationally certified professional staffs
 - ❖ Good infrastructure
 - ❖ Good supply chain
 - ❖ Strong international leadership role
 - ❖ Emerging private and PPP initiatives
 - ❖ Emerging affordable technology in PO.
 - ❖ Efficiency Services
 - ❖ Financial Support from the Government
 - ❖ Enough technical staffs

8. WAY FORWARD

- The PM HE Samdech Hun Sen migrates PRCs to MoH to ensure sustainability – this shows Cambodia's highest commitment.
- Support PRCs as they integrate into the MoH policies and programmes
- Purchase Cambodian assistive products to generate income for sustainability – we produce low cost and good quality devices.
- We still need the support of the international community to reach the full potential of our capacity in rehabilitation.
- Please come to speak to me anytime, we are always open for cooperation.



THANK YOU FOR YOUR ATTENTION

HE.(Mr.) Mao Bunnhath,
Advisor and Director of Victim Assistance Department,
Cambodian Mine Action and Victim Assistance Authority(CMAA)
Tel: (855) 12 94 93 92, 98 60 9999
E-mail: mao_bunnhath@cmaa.gov.kh
Website: www.cmaa.gov.kh

