

IMPROVISED MINES

CURRENT RESEARCH RESULTS AND ACKNOWLEDGED CHALLENGES



An abandoned car lies near several improvised mines after a mine explosion in al-Sagra village, in Iraq's Anbar governorate. The NPA is undertaking clearance in the area.

© Marijn van Broekhoven/NPA, February 2023

IMPROVISED MINES IN MONITOR REPORTING

In Monitor reporting:

- Improvised mines are **improvised explosive devices** that are designed to be detonated by the presence, proximity or contact of a person or vehicle.
- Those that, by design, can detonate due to the presence, proximity or contact of a person are anti-personnel mines and prohibited under the Mine Ban Treaty.
- While not all improvised mines are anti-personnel mines, those with sensitive initiation systems, such as pressure-plate or crush-wire, even with large explosive charges – for example emplaced on roads – can be antipersonnel mines.

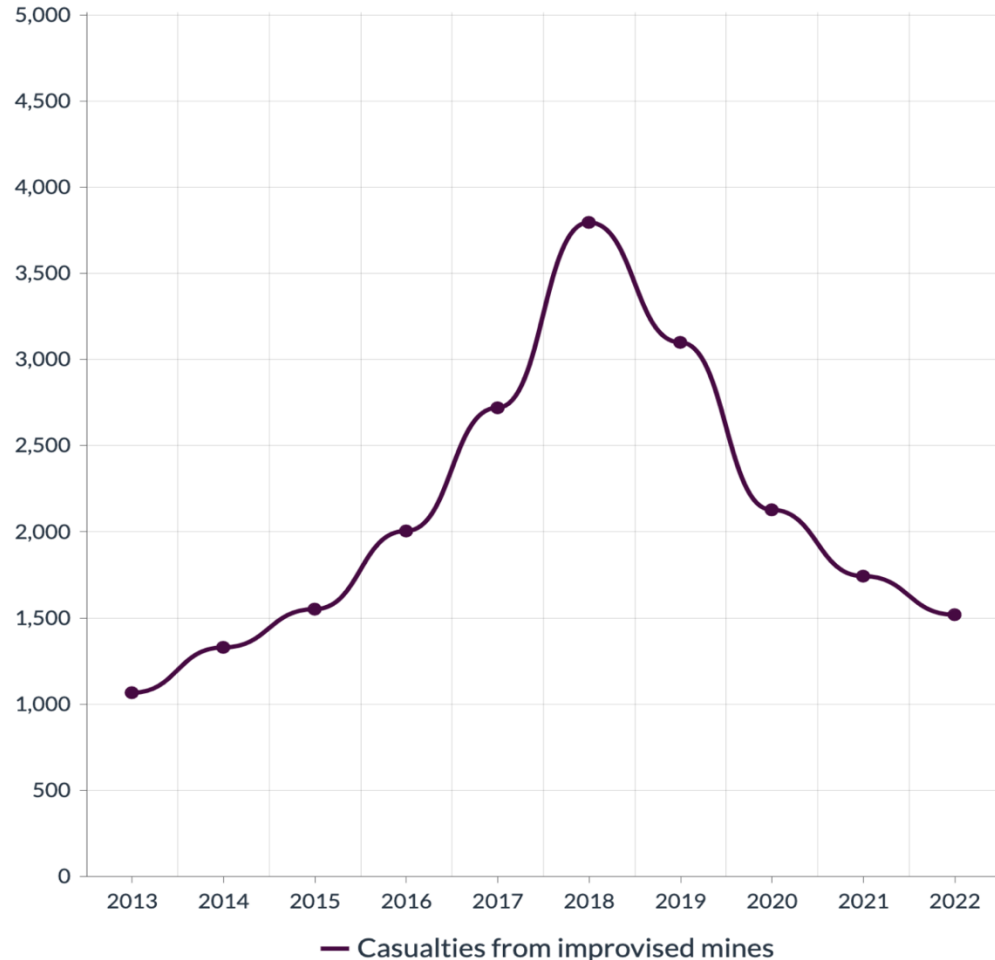
IMPROVISED MINES IN MONITOR REPORTING

The information available to us indicates that the initiation of most improvised mines causing casualties allows them to be activated by a person.

Therefore, most casualties caused by improvised mines are believed to be caused by improvised anti-personnel mines.

CASUALTIES CAUSED BY IMPROVISED MINES

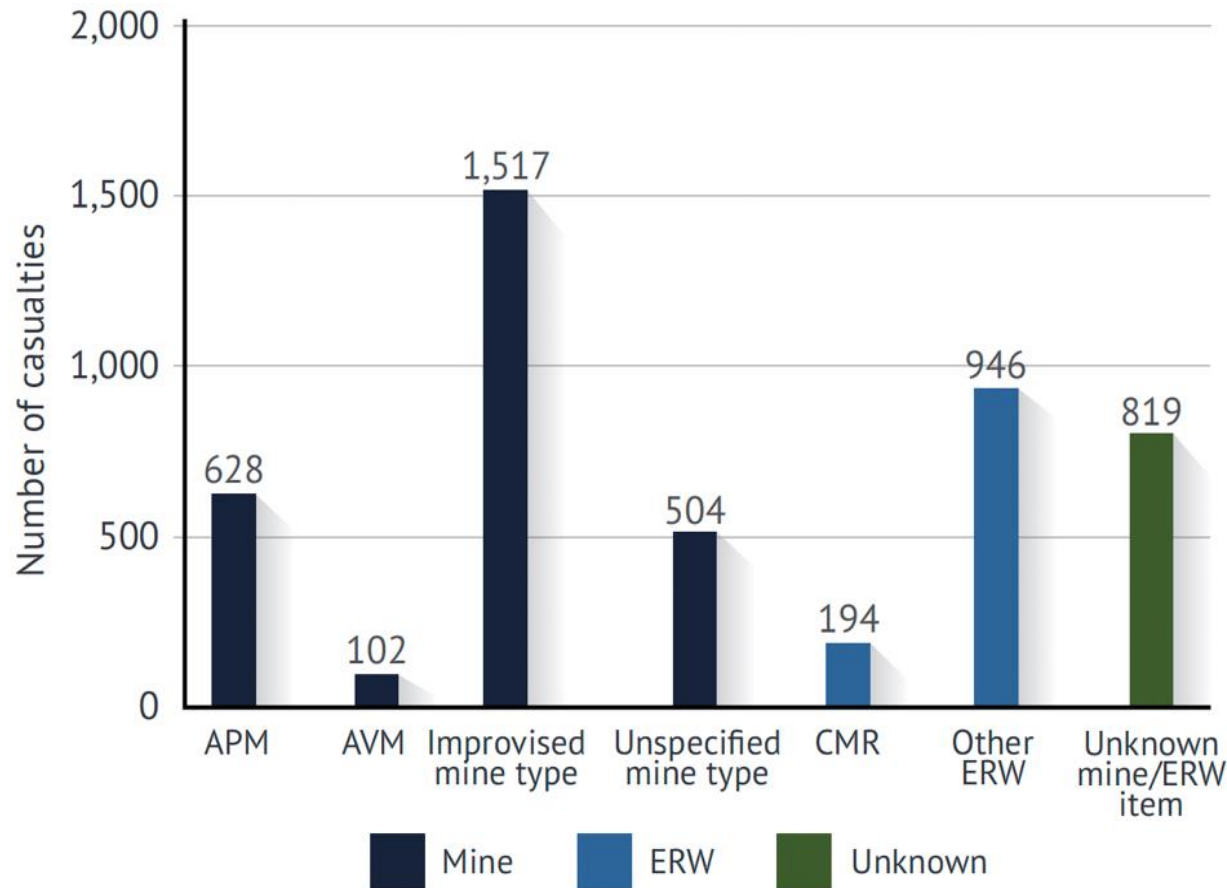
Landmine Monitor 2023



- According to our global data, of all explosive items, improvised mines killed or injured the highest number of people annually for the seventh consecutive year.
- Numbers peaked around 2017. The decrease in reported casualties since is due to changes in conflict, territorial control, and reporting in countries including Afghanistan, Colombia, Yemen, and Syria.

CASUALTIES CAUSED BY IMPROVISED MINES

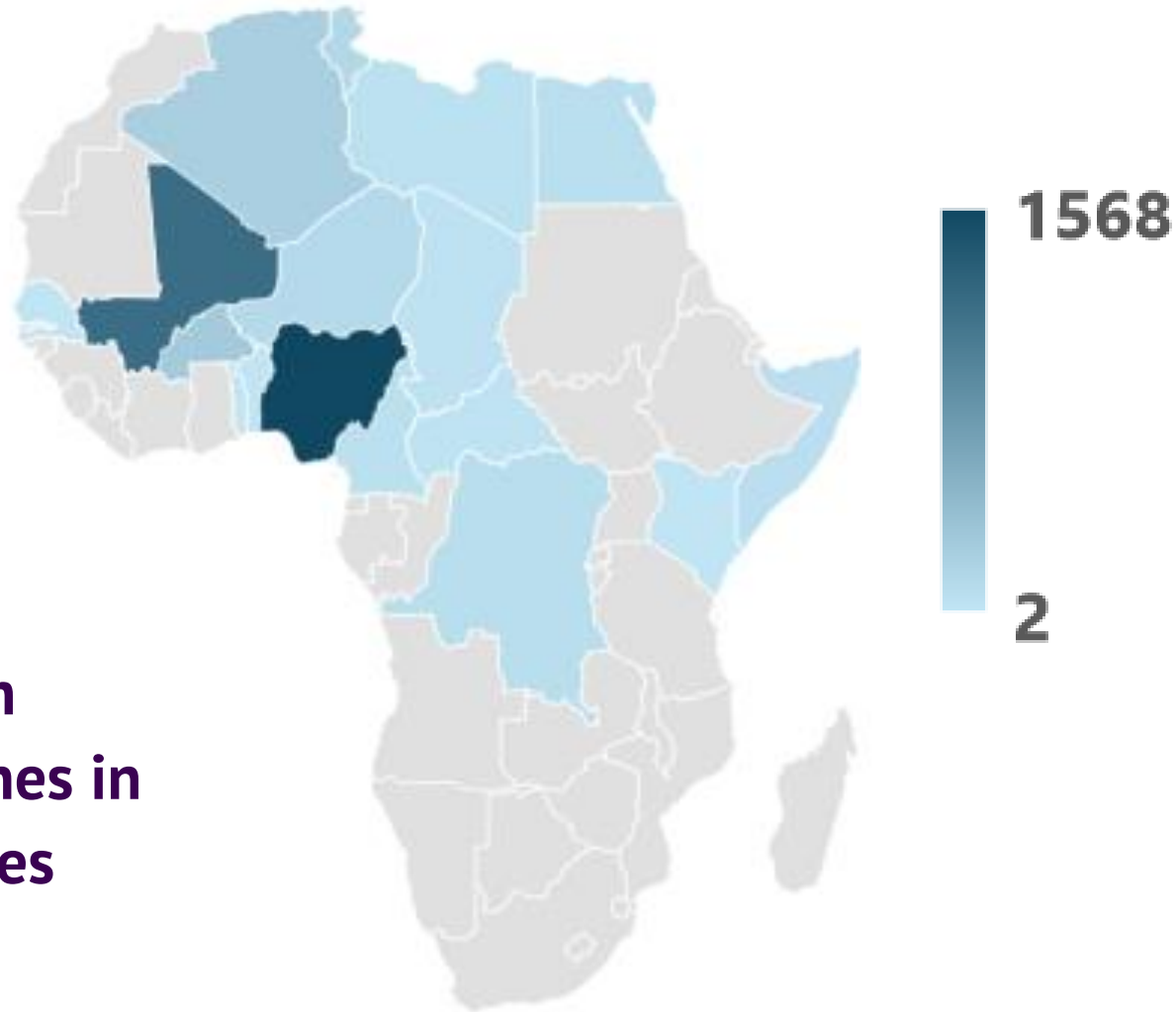
Landmine Monitor 2023



- In 2022, over 32% of all people killed or injured by mines/ERW were victims of improvised mines (1,517): **2.5 times more than casualties caused by conventional anti-personnel mines.**
- Another 504 casualties (10.7% of all ERW/mine victims) were caused by unspecified mine types.

CASUALTIES CAUSED BY IMPROVISED MINES

Landmine Monitor 2023

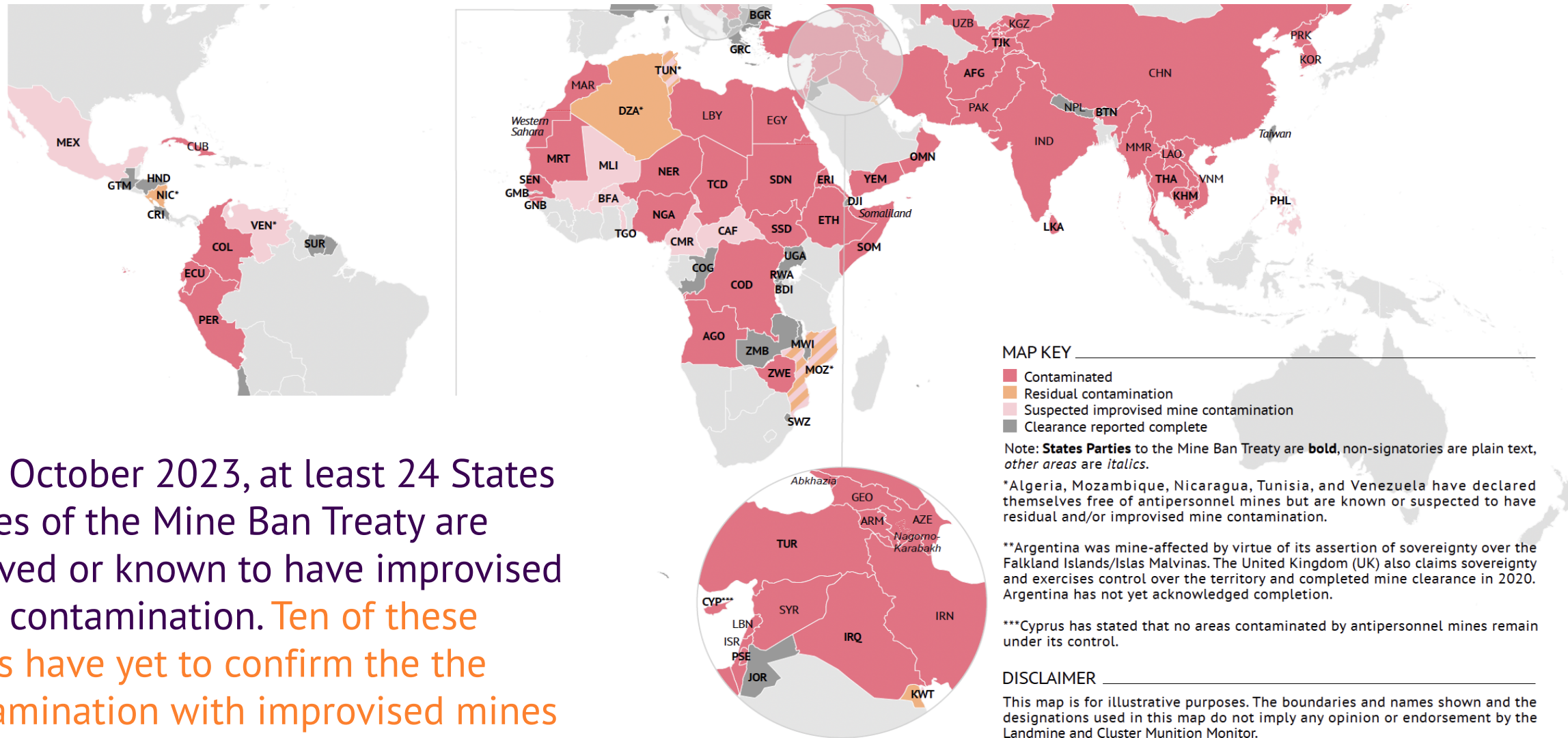


**Casualties from
improvised mines in
African countries
2013 – 2022**

Algeria	216
Benin	2
Burkina Faso	259
Cameroon	55
Central African Republic	18
Chad	29
DRC	75
Egypt	65
Kenya	5
Libya	43
Mali	1187
Niger	108
Nigeria	1568
Senegal	3
Somalia	56
Togo	7
Tunisia	126

SUSPECTED CONTAMINATION WITH IMPROVISED MINES

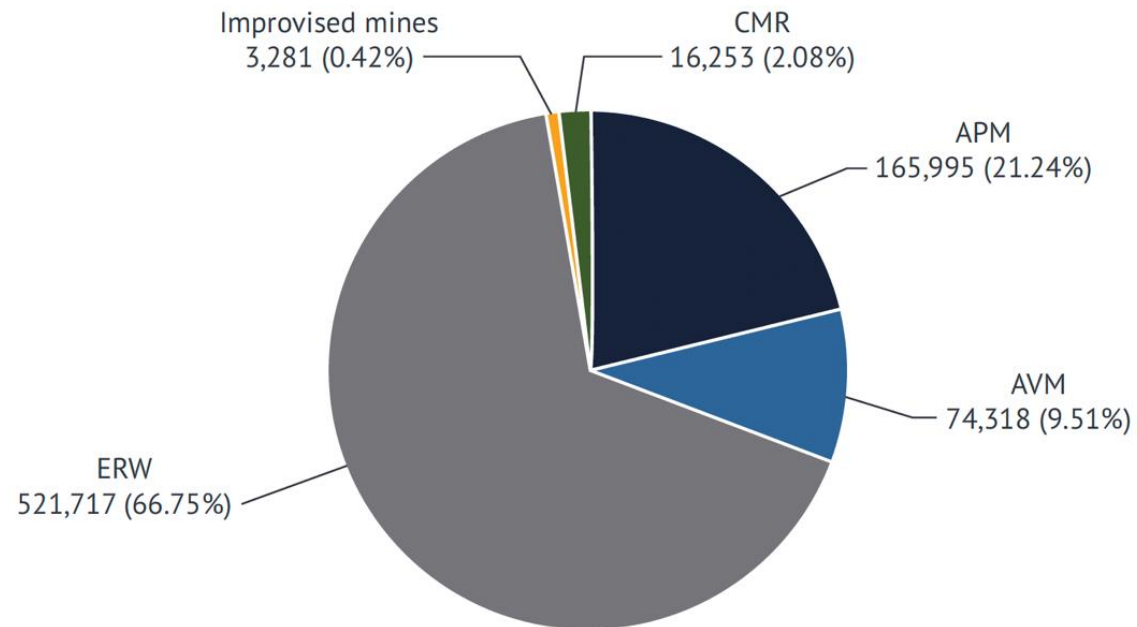
Landmine Monitor 2023



As of October 2023, at least 24 States Parties of the Mine Ban Treaty are believed or known to have improvised mine contamination. **Ten of these states have yet to confirm the the contamination with improvised mines**

CLEARANCE/DISPOSAL OF IMPROVISED MINES

Landmine Monitor 2023



In 2022, States Parties destroyed 50 times more conventional anti-personnel mines than improvised mines



2022 reporting of African countries:

Destruction/clearance of improvised mines and conventional anti-personnel mines: **Angola and Mali**

Destruction/clearance of conventional anti-personnel mines: **Algeria, DRC, Somalia, Somaliland, South Sudan, Sudan, Zimbabwe**

Total destroyed conventional APM: 36,430

Total improvised mines destroyed: 84

CLEARANCE/DISPOSAL OF IMPROVISED MINES

Landmine Monitor 2023

- Clearance of mine contaminated land including improvised mines by all States Parties in 2022: 219.31 km²
- Proportion of area cleared with improvised mines...
... that's where the challenge of mapping the extent of the threat of improvised mines starts ...

OUR COMMON CHALLENGE: DATA COLLECTION AND ANALYSIS

Landmine Monitor 2023

Lack of detailed and precise information related to incidents in the first place:

- *... Around 1 March 2023, an IED planted by insurgents detonated, injuring approximately 8 people...*
- *... On 25 February 2023, two people died as a result of the detonation of an explosive device....*
- *... On 3 May, an explosive device was triggered in front of a house and caused 3 casualties...*

OUR COMMON CHALLENGE: DATA COLLECTION AND ANALYSIS

Landmine Monitor 2023

Inconsistent reporting of contamination and clearance of of improvised mines:

- ... We identified 2km² of mine contaminated areas including improvised mines IEDs and anti-personnel mines.
- ... We cleared 3.17km² of antipersonnel mine contaminated land including improvised mines and 8.06km² of IED contaminated land. During this tasks we destroyed 7,500 mines and 10,000 IEDs including improvised mines.

IT'S GREAT TO BE HERE – WE ARE LOOKING FORWARD TO:

Landmine Monitor 2023

- Hear about your challenges, concerns and lessons learned.
- Discuss ways how we can improve data collection and analysis together:
 - To gain a better understanding of the nature and extent of the threat.
 - Take appropriate action to reduce the impact from improvised mines.

MORE INFORMATION

Landmine Monitor 2023

#LMM2023 #LandmineMonitor

Download the full report at:
bit.ly/LandmineMonitor2023

Visit our website:
www.the-monitor.org

Follow us on Twitter:
[@MineMonitor](https://twitter.com/MineMonitor)

Get in touch:
monitor@icblcmc.org



Two survey operators from the White Helmets complete a non-technical survey report in Aleppo governorate, Syria.
© White Helmets, 2023

Landmine & Cluster Munition
MONITOR